

Planning - Oxford City Planning Committee

On **Tuesday 19 March 2024** At **6.00 pm**

www.oxford.gov.uk



Presentations

Contents

Note: Planning Committee presentations contain mostly pictures, maps and plans. These are not in an accessible format.

To see full details of the application including full plans, representations, public comments and supplementary information, please [click here](#) and enter the relevant Planning Reference number in the search box

3.	23/02114/FUL: John Radcliffe Hospital, Headley Way, Oxford OX3 9DU	3 - 34
4.	23/02506/CT3: South Side, Oxpens Road, Oxford OX1 1RX	35 - 56
5.	23/01198/FUL: Unit 1, Ozone Leisure Park, Grenoble Road, Oxford	57 - 78
6.	23/00516/FUL: The Annexe, Madina Mosque, 2 Stanley Road, Oxford OX4 1QZ	79 - 94

The agenda, reports and any additional supplements can be found together with this supplement on the committee meeting webpage.

*View or subscribe to updates for agendas, reports and minutes at mycouncil.oxford.gov.uk.
All public papers are available from the calendar link to this meeting once published*

Oxford City Council, Town Hall, St Aldate's Oxford OX1 1BX

This page is intentionally left blank

Oxford City Planning Committee Presentation

23/02214/FUL

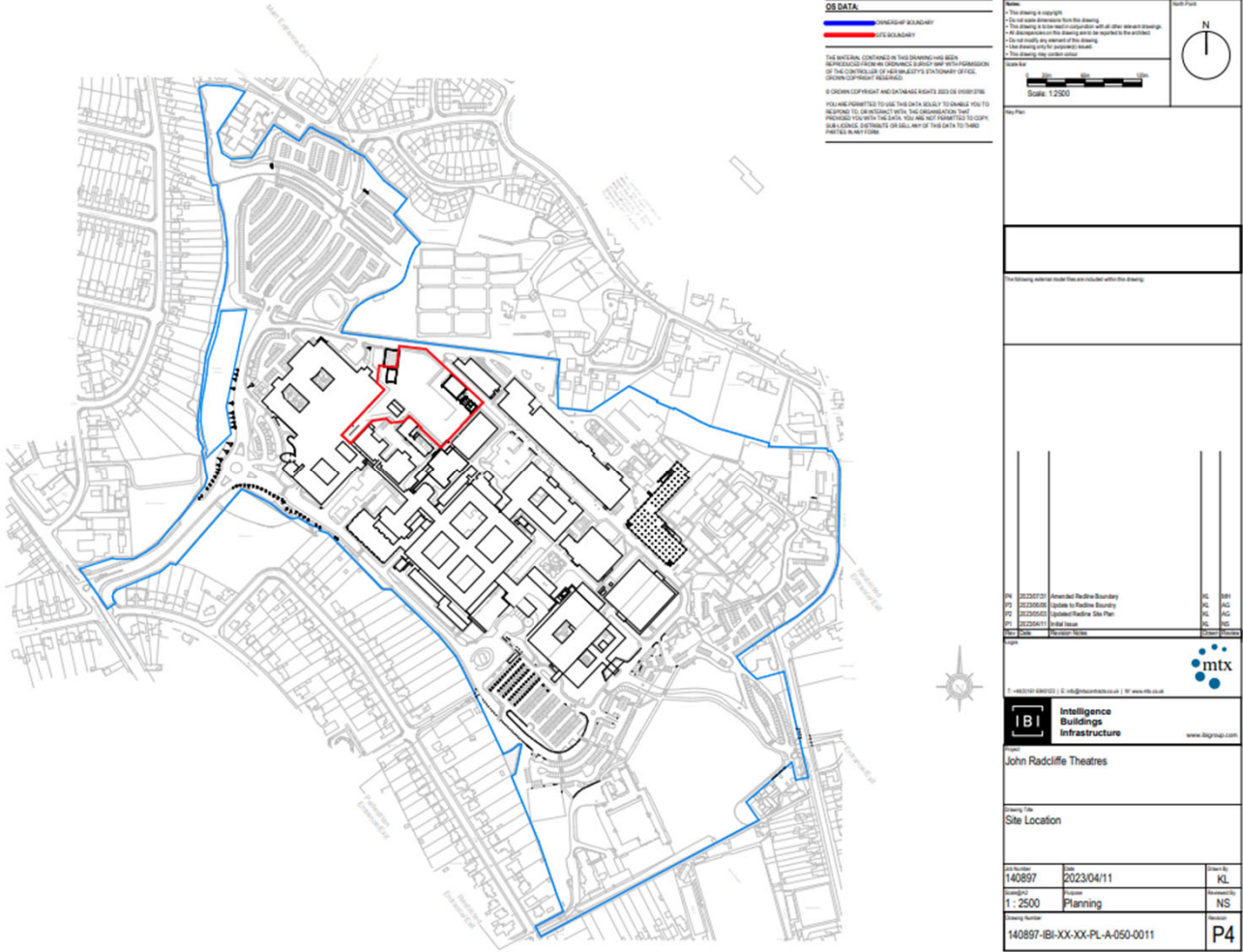
The John Radcliffe Hospital

www.oxford.gov.uk

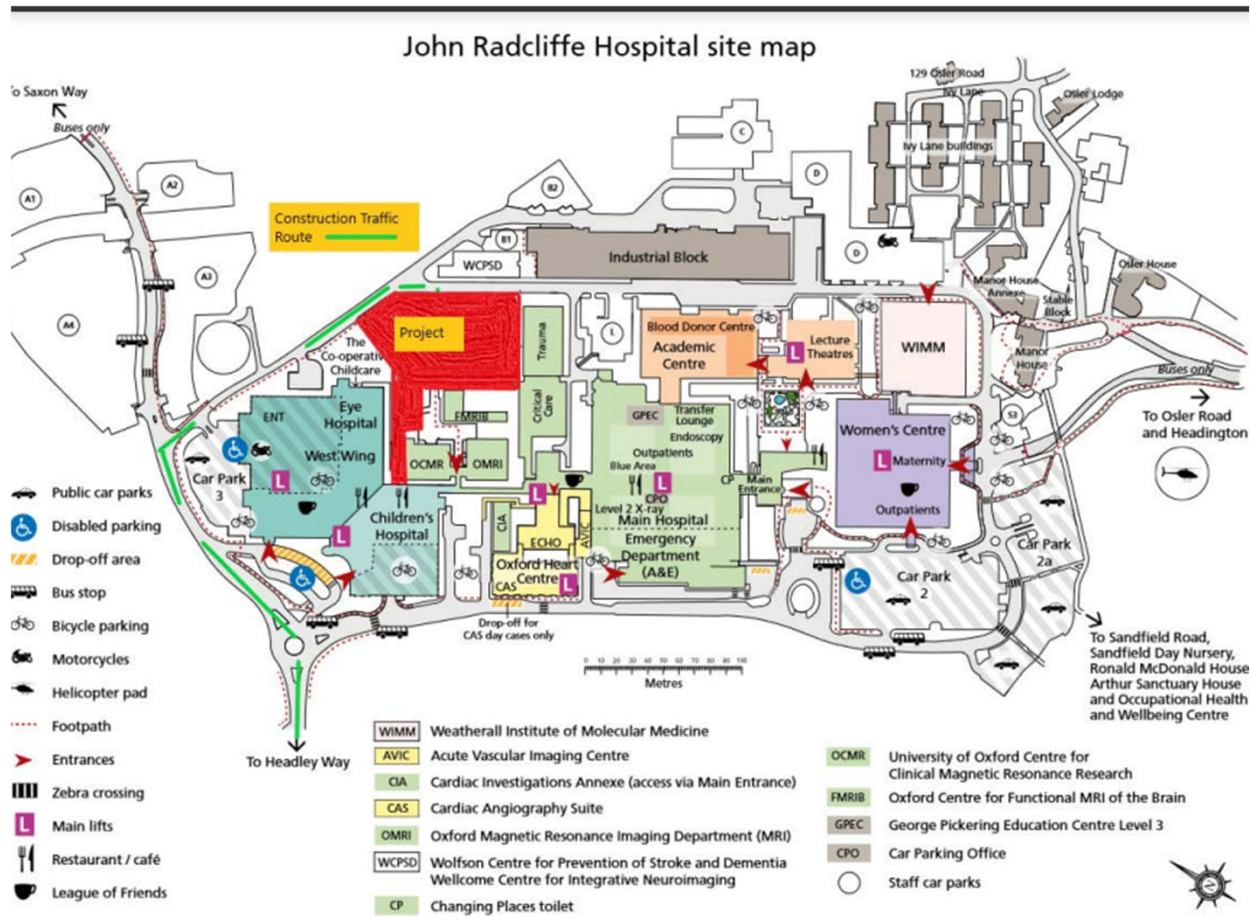


Agenda Item 3

Site Location Plan



Site Location within the John Radcliffe Hospital Site



View towards the site from internal access road (beside helipad)



www.oxford.gov.uk



View of the front of the site and Eye Hospital



www.oxford.gov.uk



View of the site Eye Hospital to the right, OMRI and FMRIB centre, ACIU to left



www.oxford.gov.uk



View of the site, existing plant foreground left and ACIU



www.oxford.gov.uk



View along internal access Road (Wolfson Building on the left, site on the right)



www.oxford.gov.uk



View of the siting of the corridor link within the site into existing Childrens Hospital (left) and Eye Hospital buildings (right)



www.oxford.gov.uk



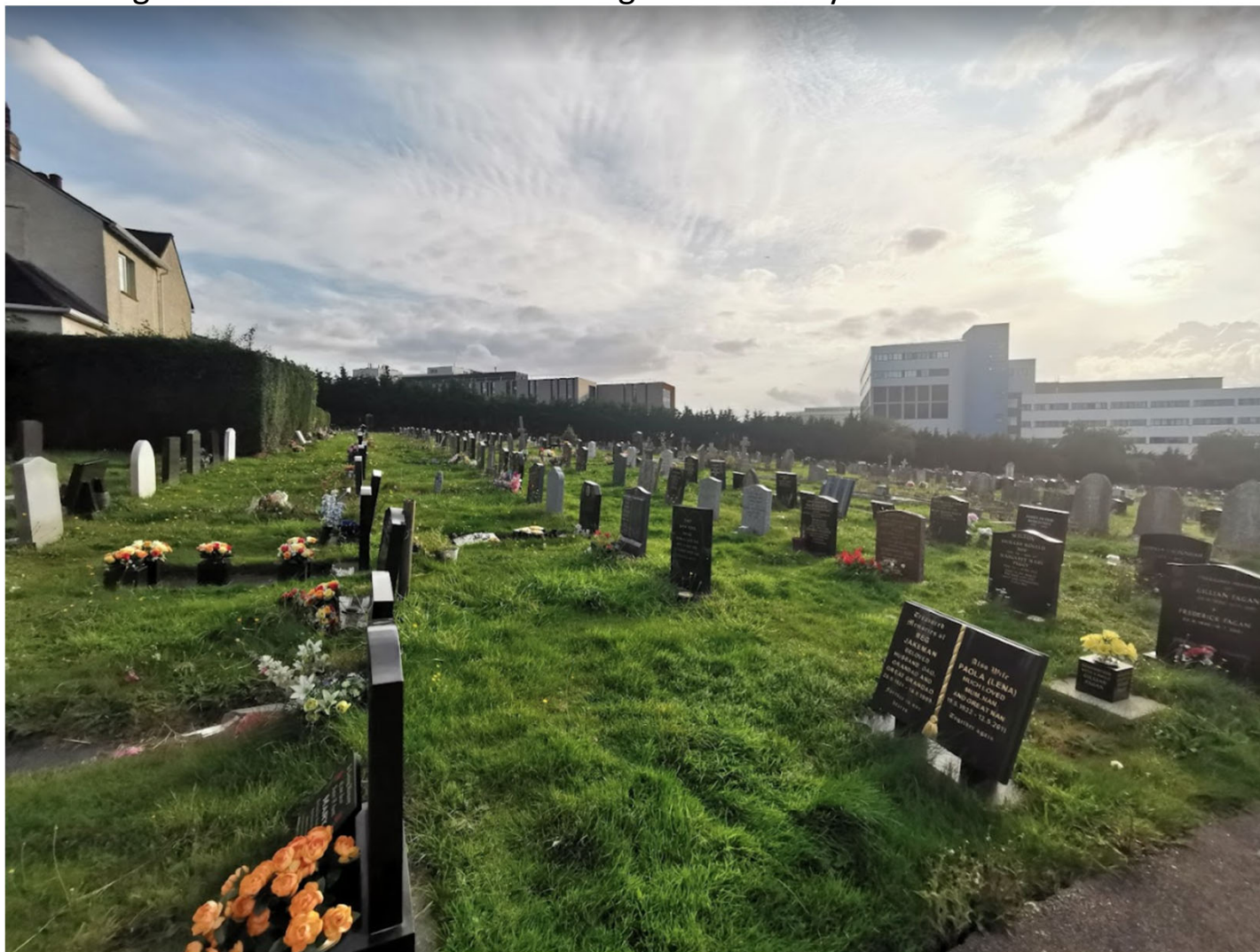
View from within the Headington Cemetery



www.oxford.gov.uk



Wide angle view from within the Headington Cemetery



www.oxford.gov.uk



View from Ingle Close (north)



www.oxford.gov.uk



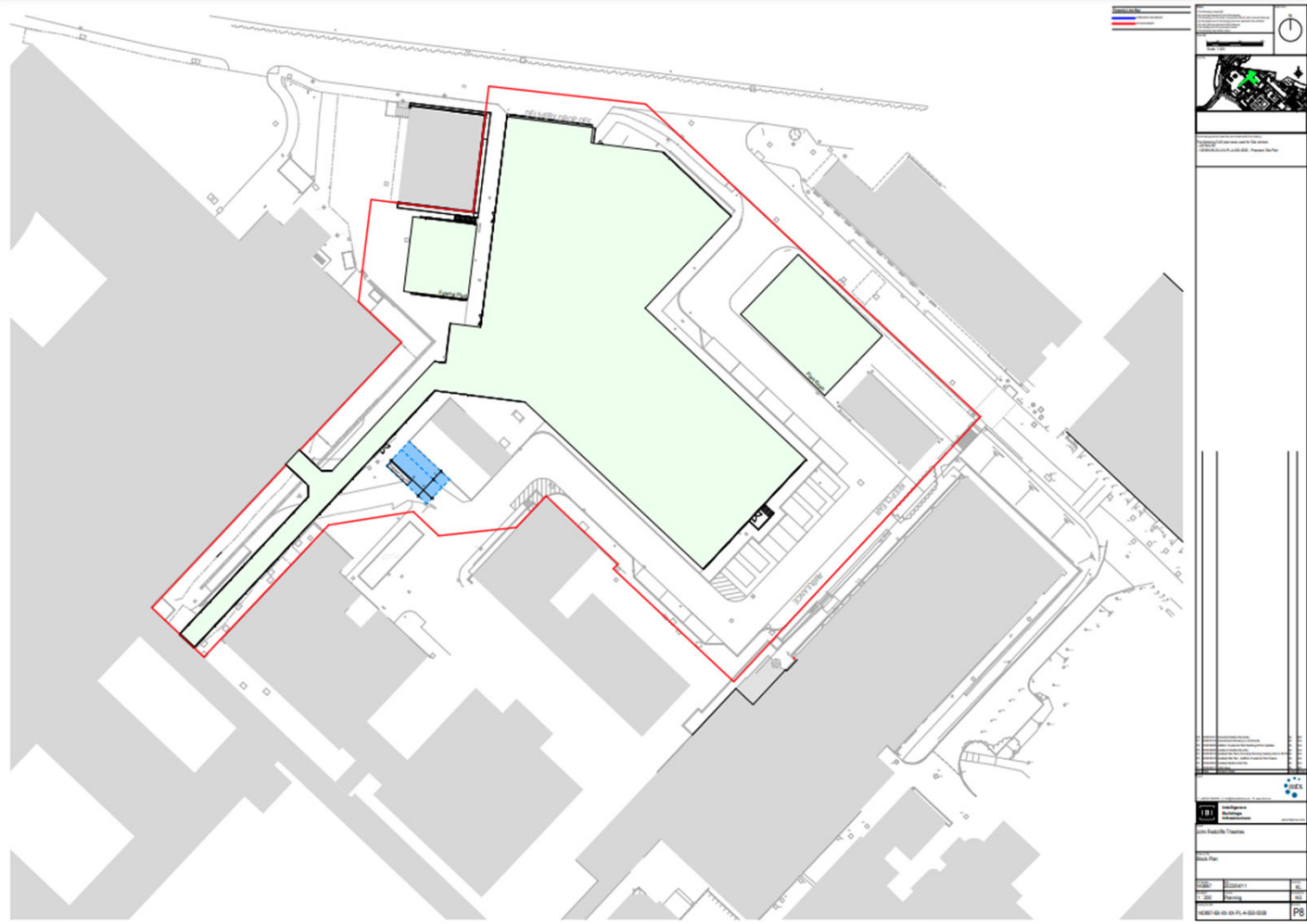
View from corner of Coniston Ave and Ambleside Drive



www.oxford.gov.uk



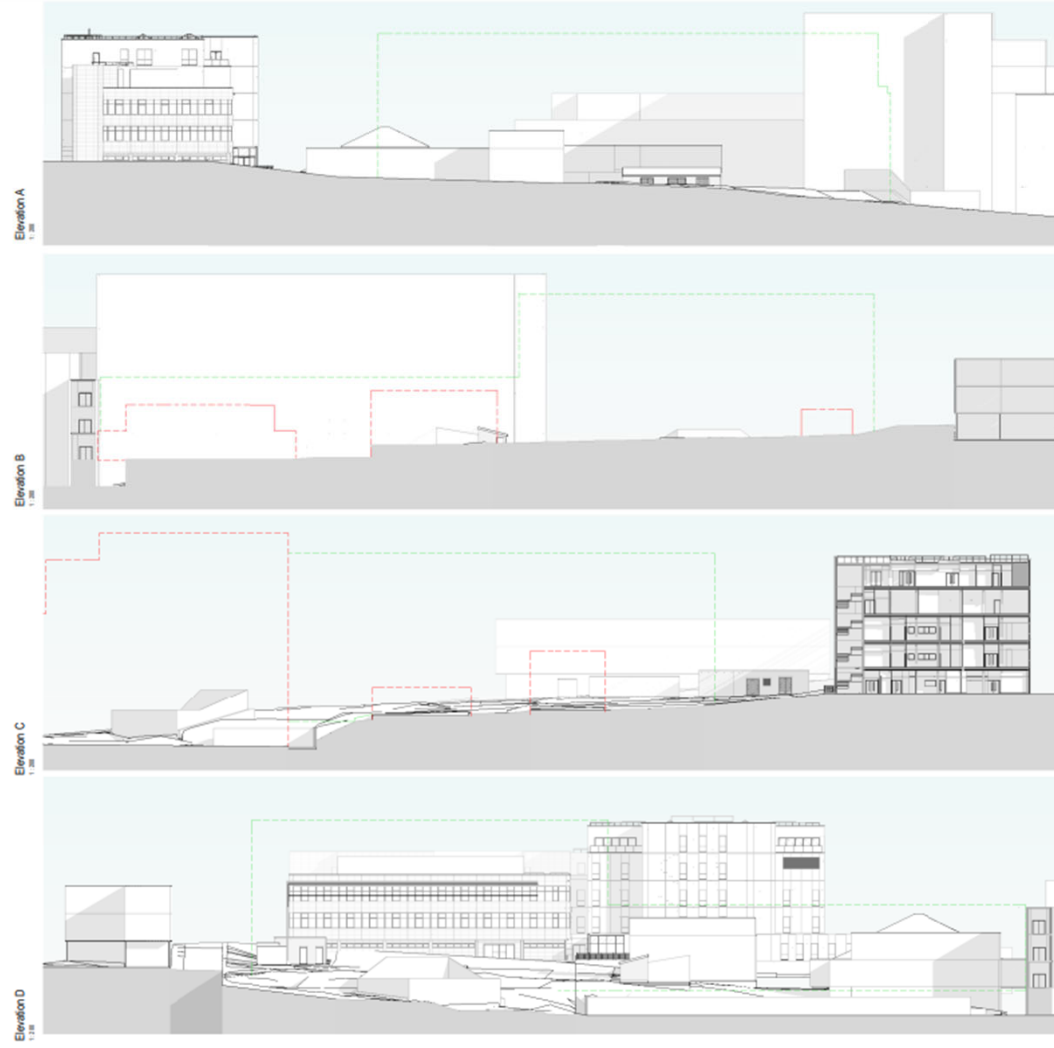
Proposed Block Plan



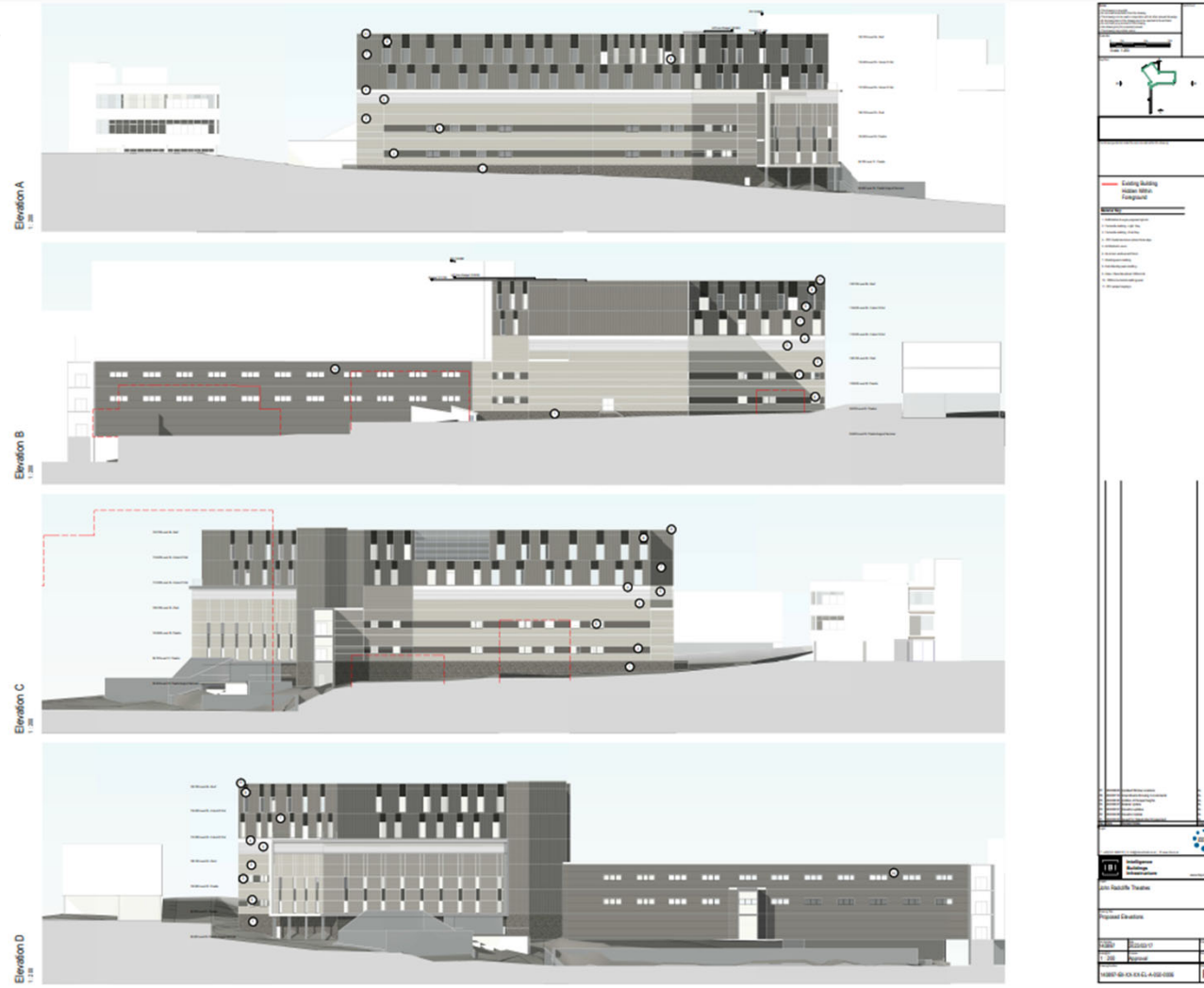
www.oxford.gov.uk



Existing Elevations



Proposed Elevations



www.oxford.gov.uk





CGI view of the front/ side elevations



vauk



CGI view from internal access road (Wolfson Building to left hand side)



vauk



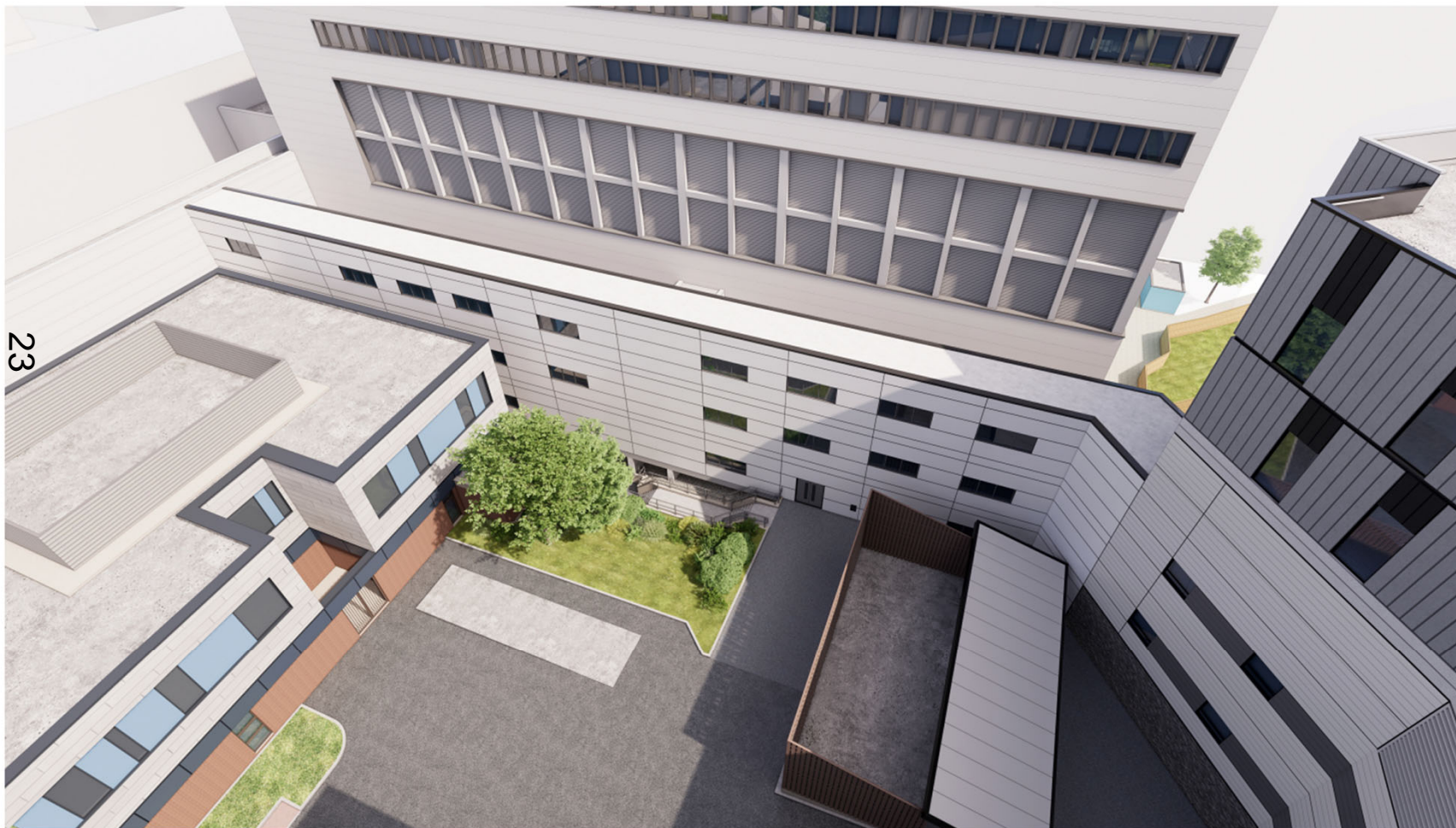
CGI view of rear elevations



vauk



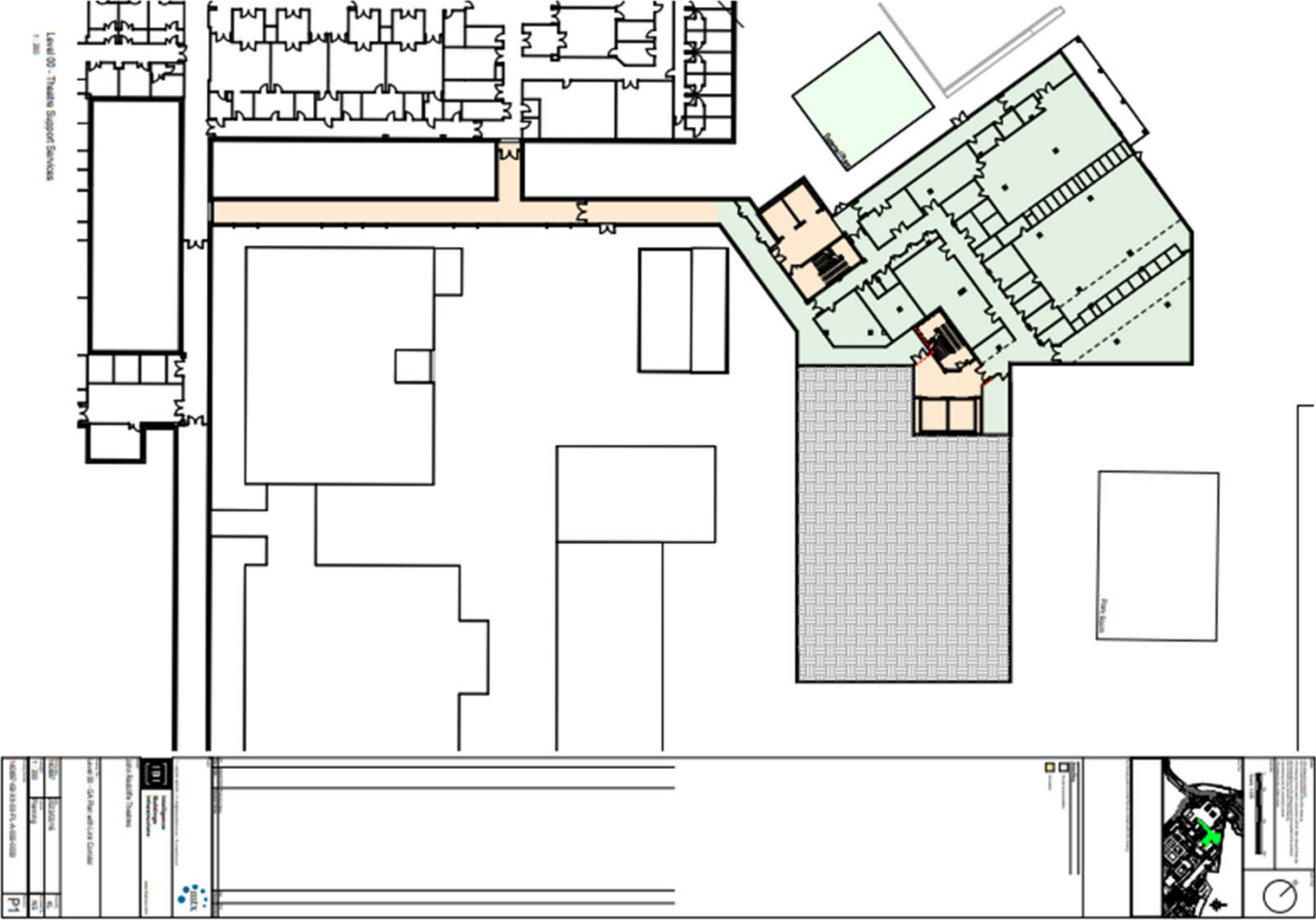
CGI – Internal courtyard showing link corridor



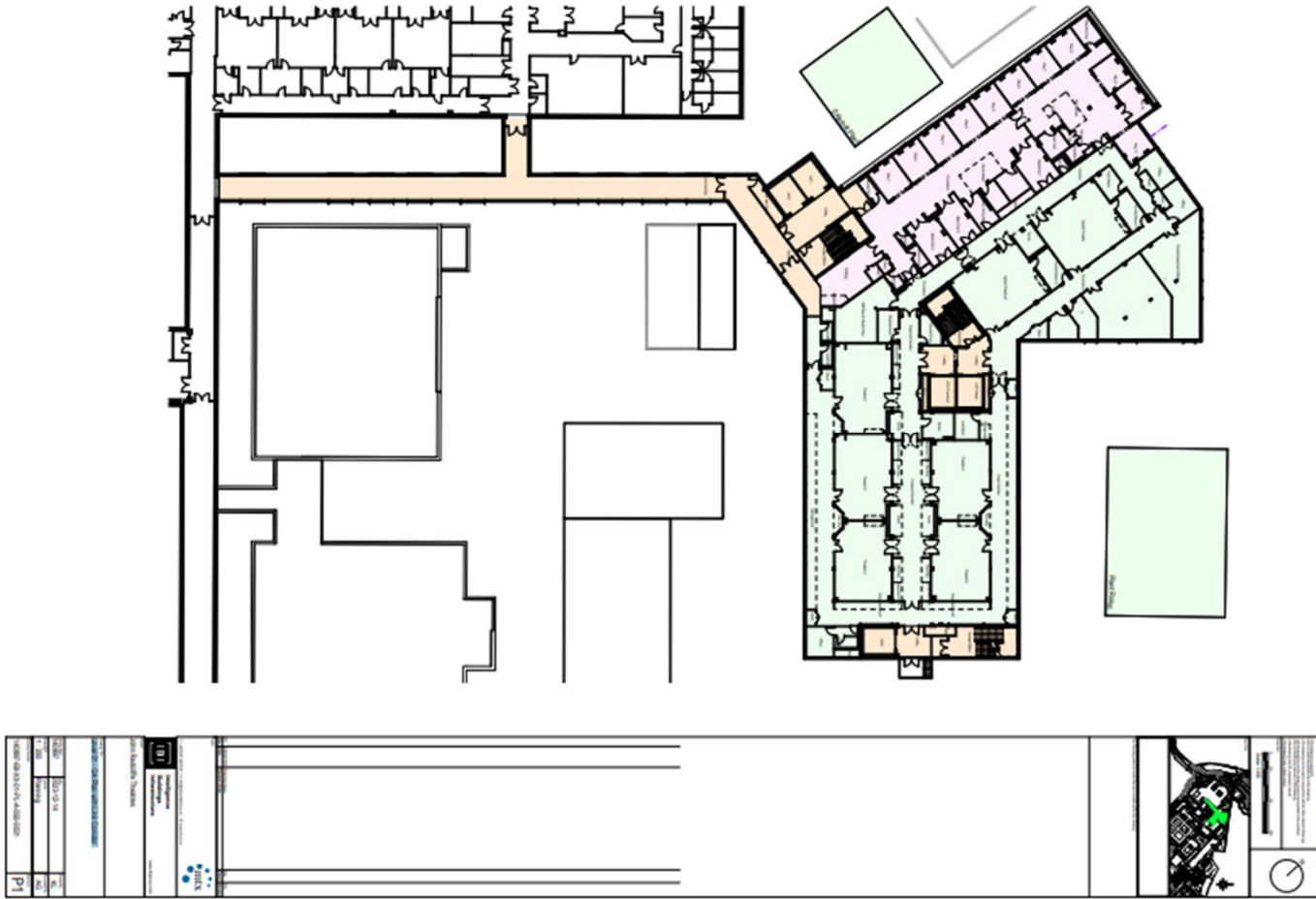
www.oxford.gov.uk



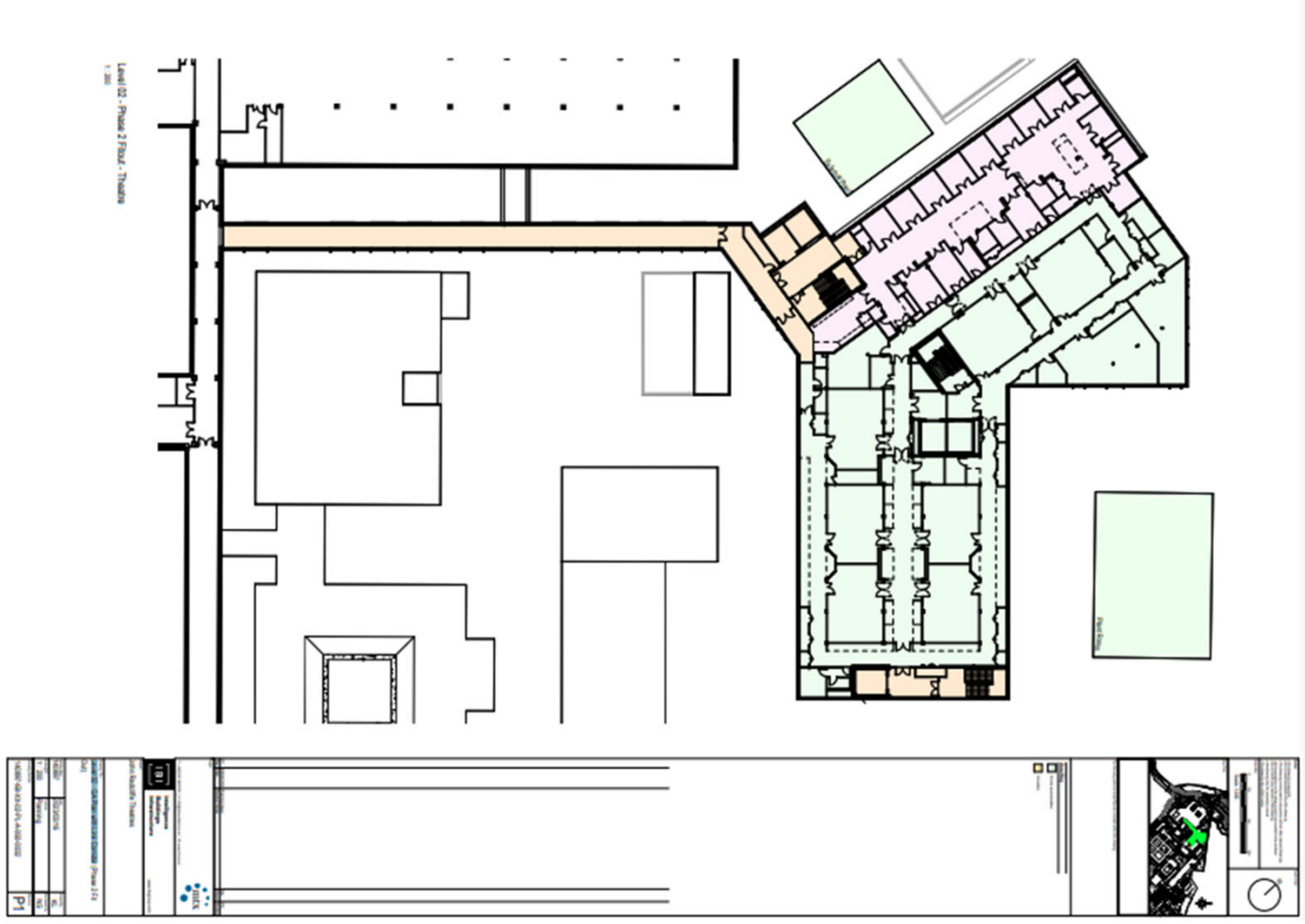
Proposed Level 00 - GA Plan with Link Corridor



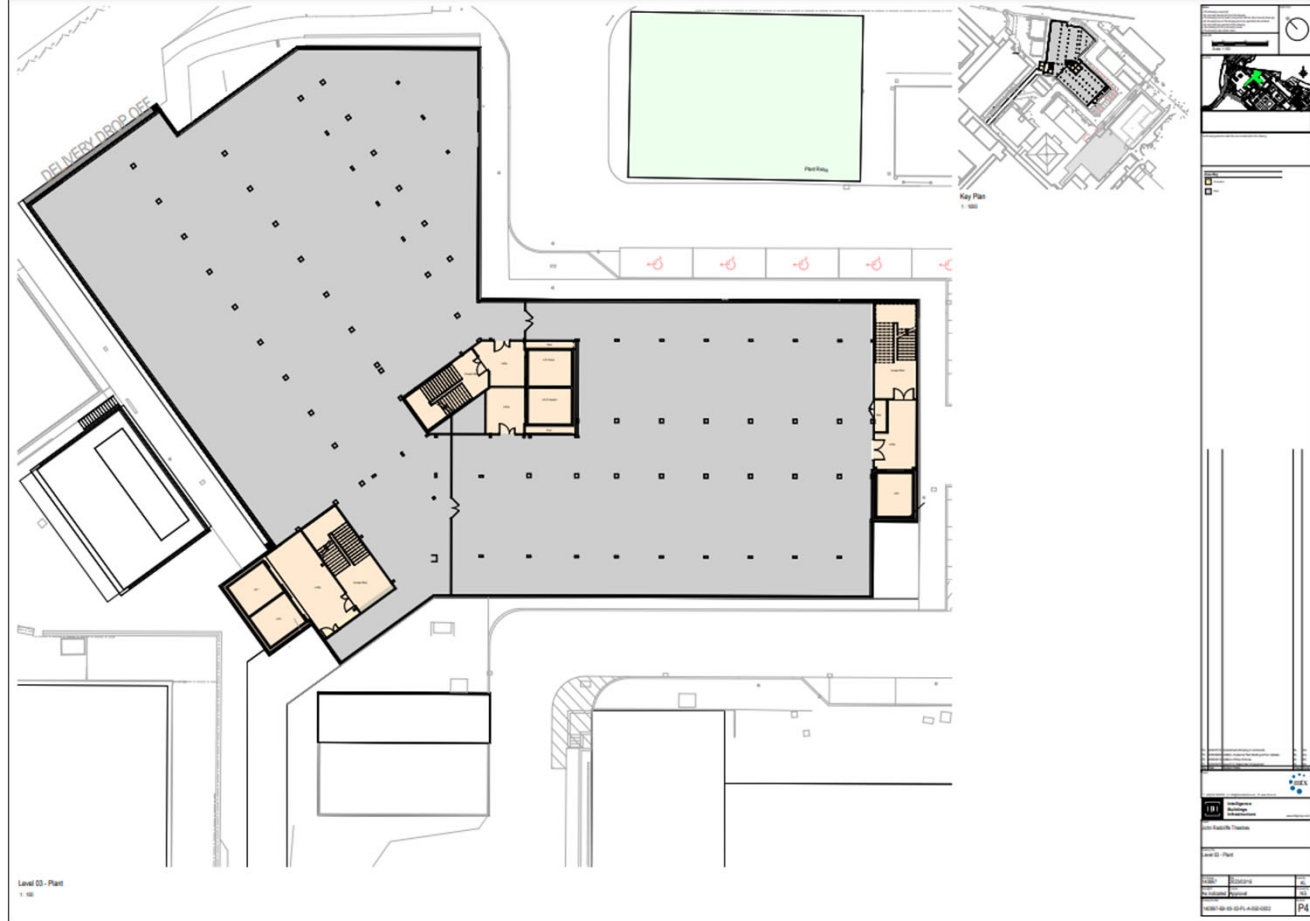
Proposed Level 01 - GA Plan with Link Corridor



Proposed Level 02 - GA Plan with Link Corrido



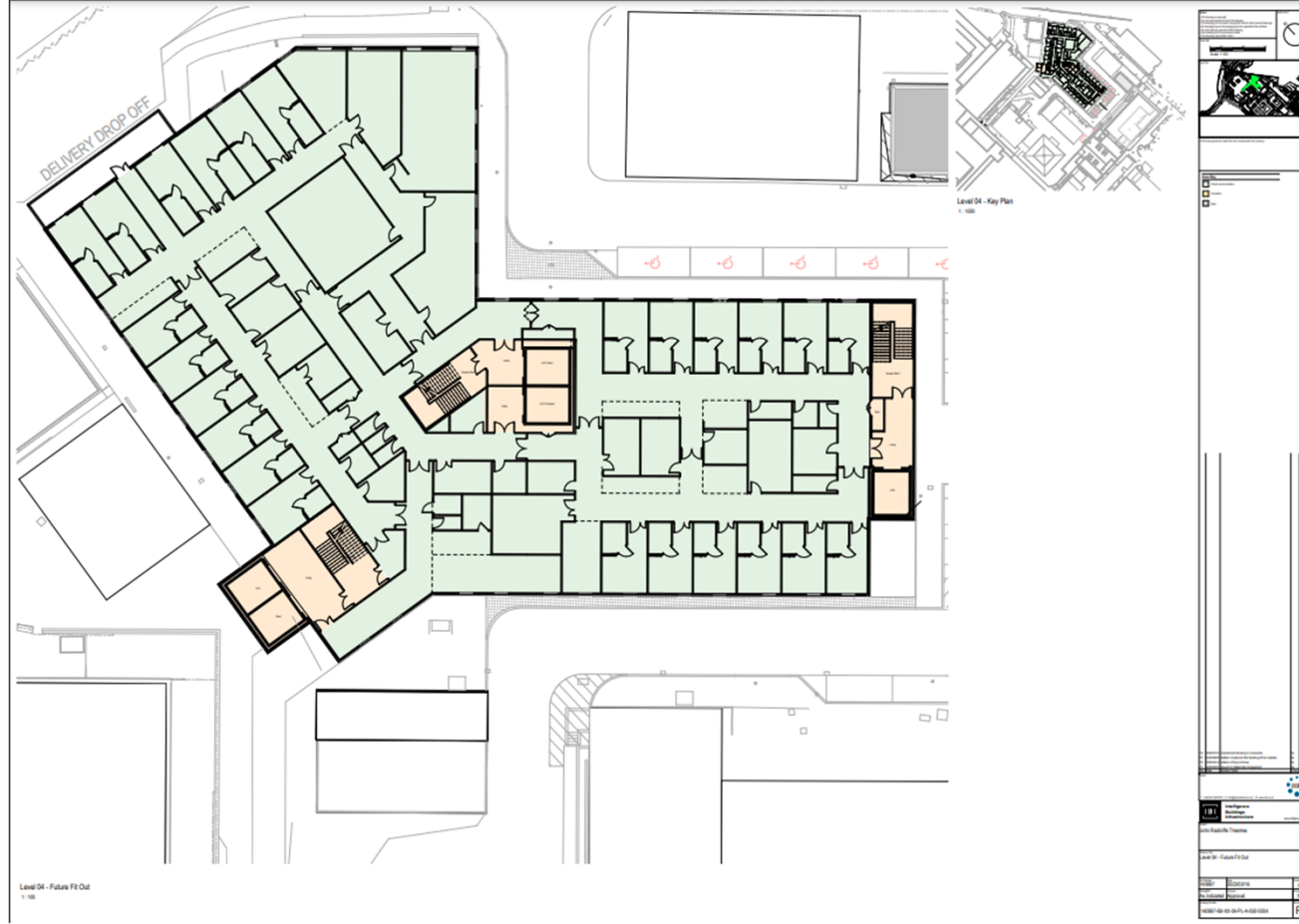
Proposed Level 3 (plant)



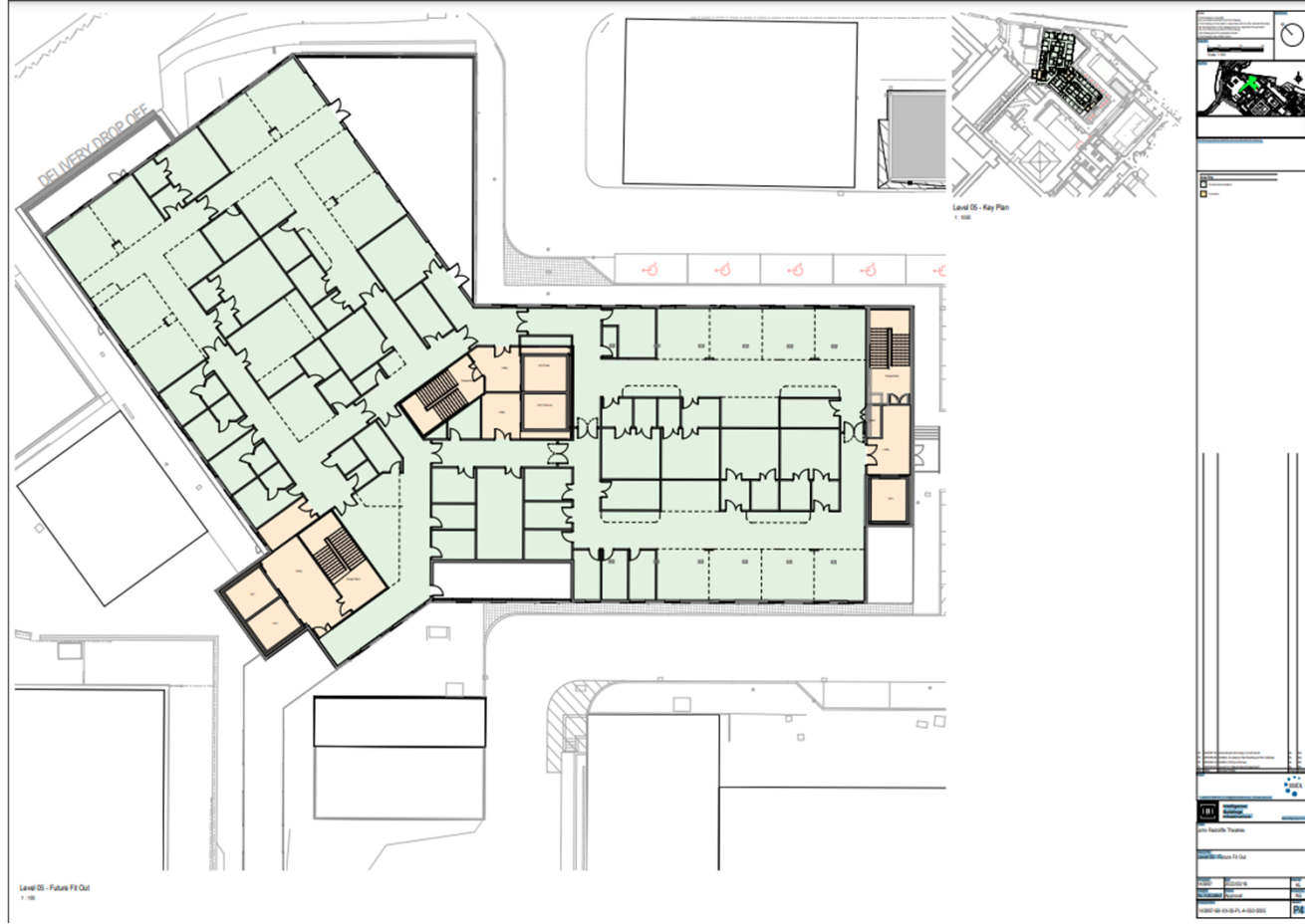
www.oxford.gov.uk



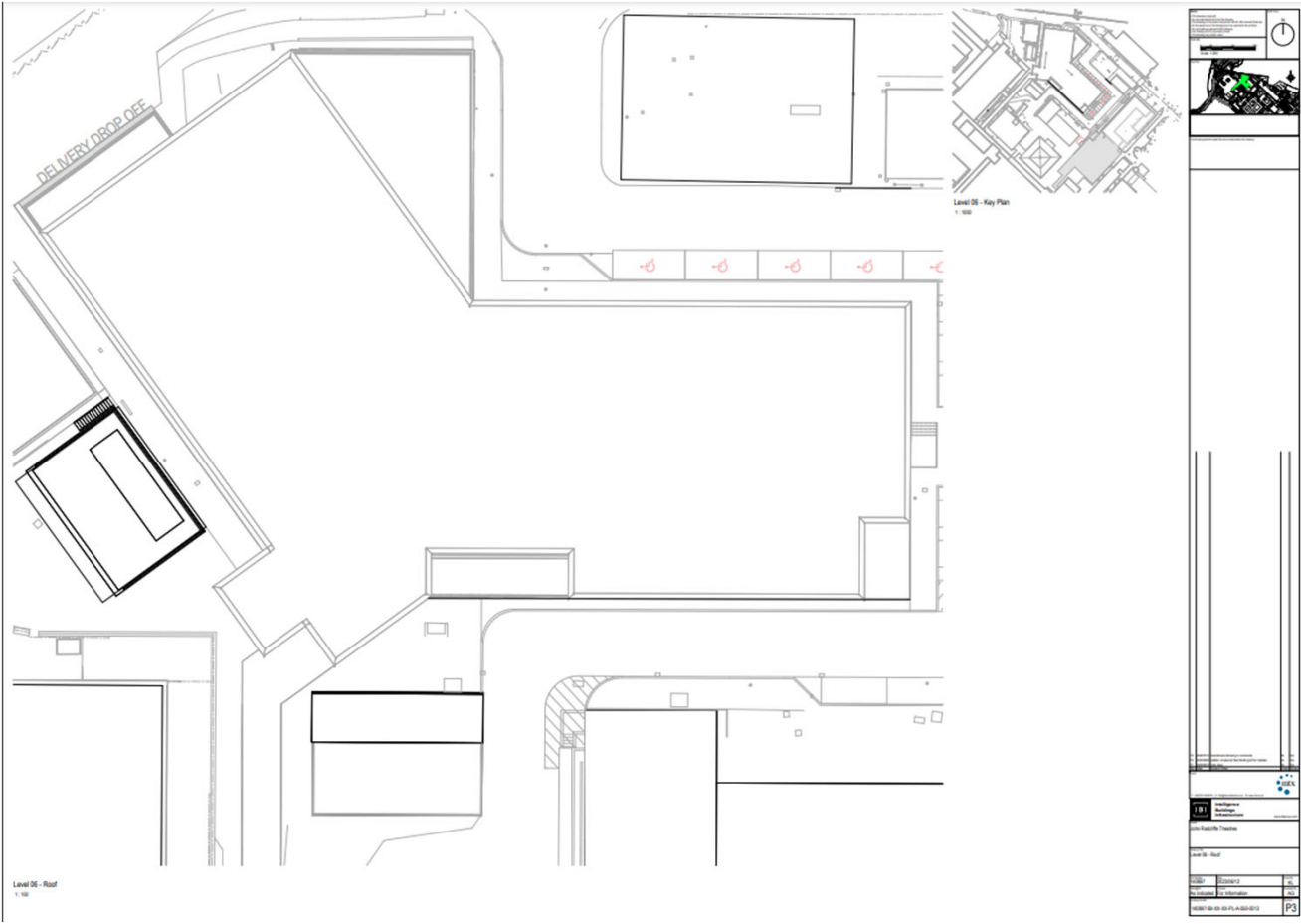
Proposed Level 4



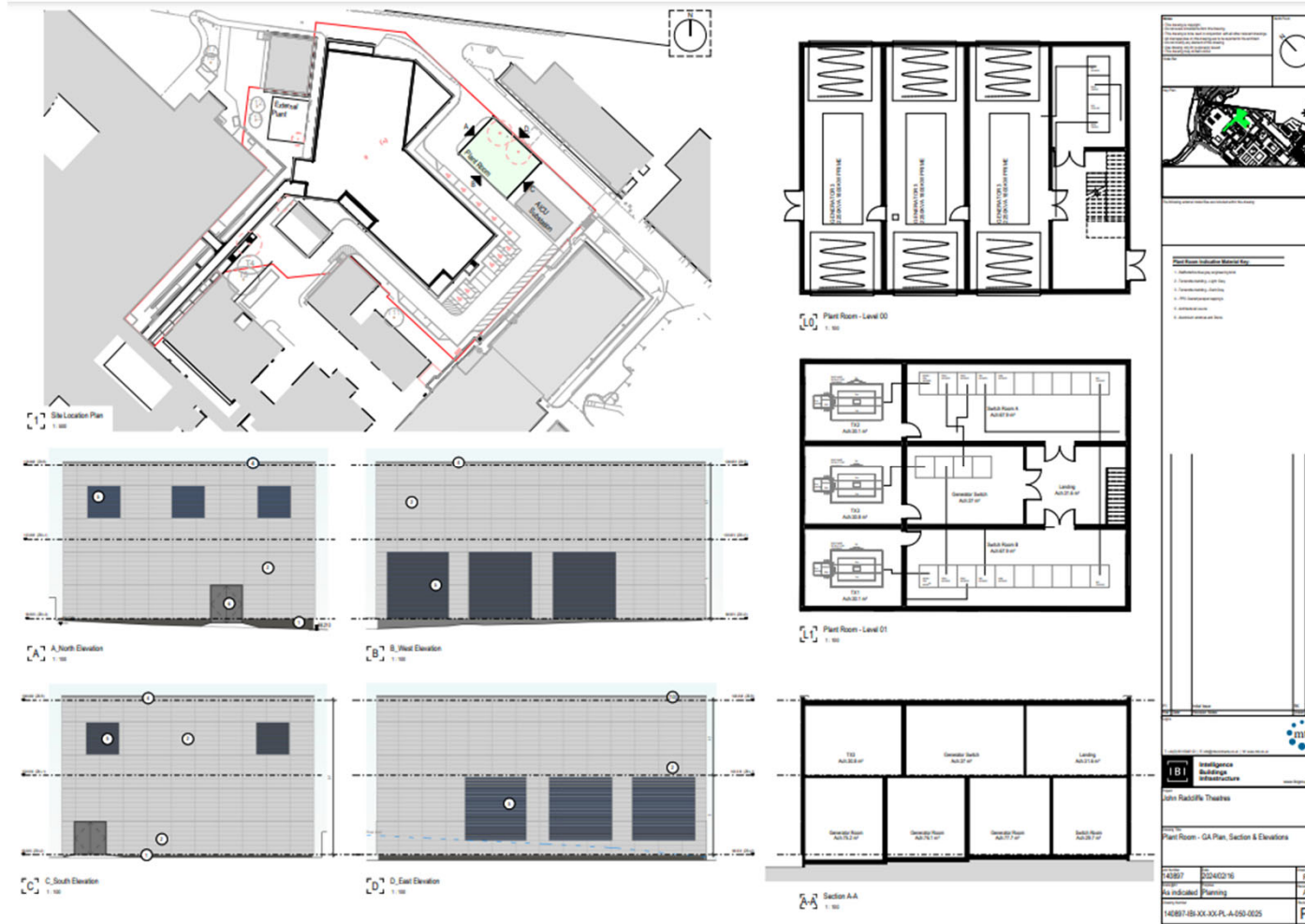
Proposed Level 5



Proposed Roof Plan



Proposed plans and elevation of the Plant room building



Long distance view



32

Photomontage 4 – Existing Hospital
with New development CGI
Photomontage Overlay



Photo of Existing Hospital
from Elsfield View Cone

www.oxford.gov.uk



High level long distance view



Photo – Existing Hospital
from St Mary's Tower

Modelled View - proposed
development; Element visible
shown as solid red



IBI IBI GROUP

Proposed Development

JR Hospital Campus

Modular Theatre Expansion
Client - Oxford University Hospitals NHS Foundation

www.oxford.gov.uk



This page is intentionally left blank

Oxford City Planning Committee Presentation

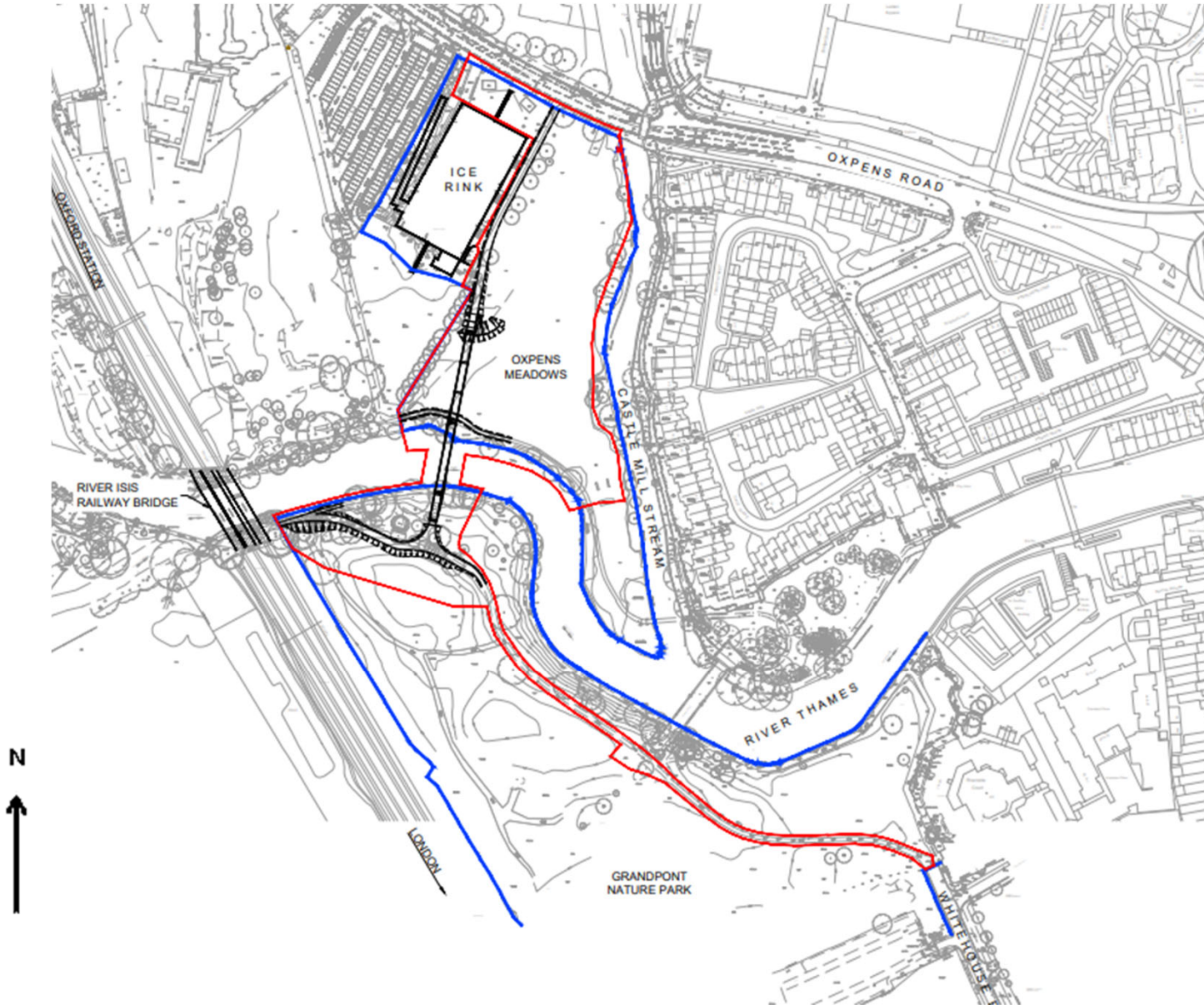
Reference Number: 23/02506/CT3

Site Address: South Side Oxpens Road

www.oxford.gov.uk



Site Plan



Landscape Plan



www.oxford.gov.uk



North Landscape Plan



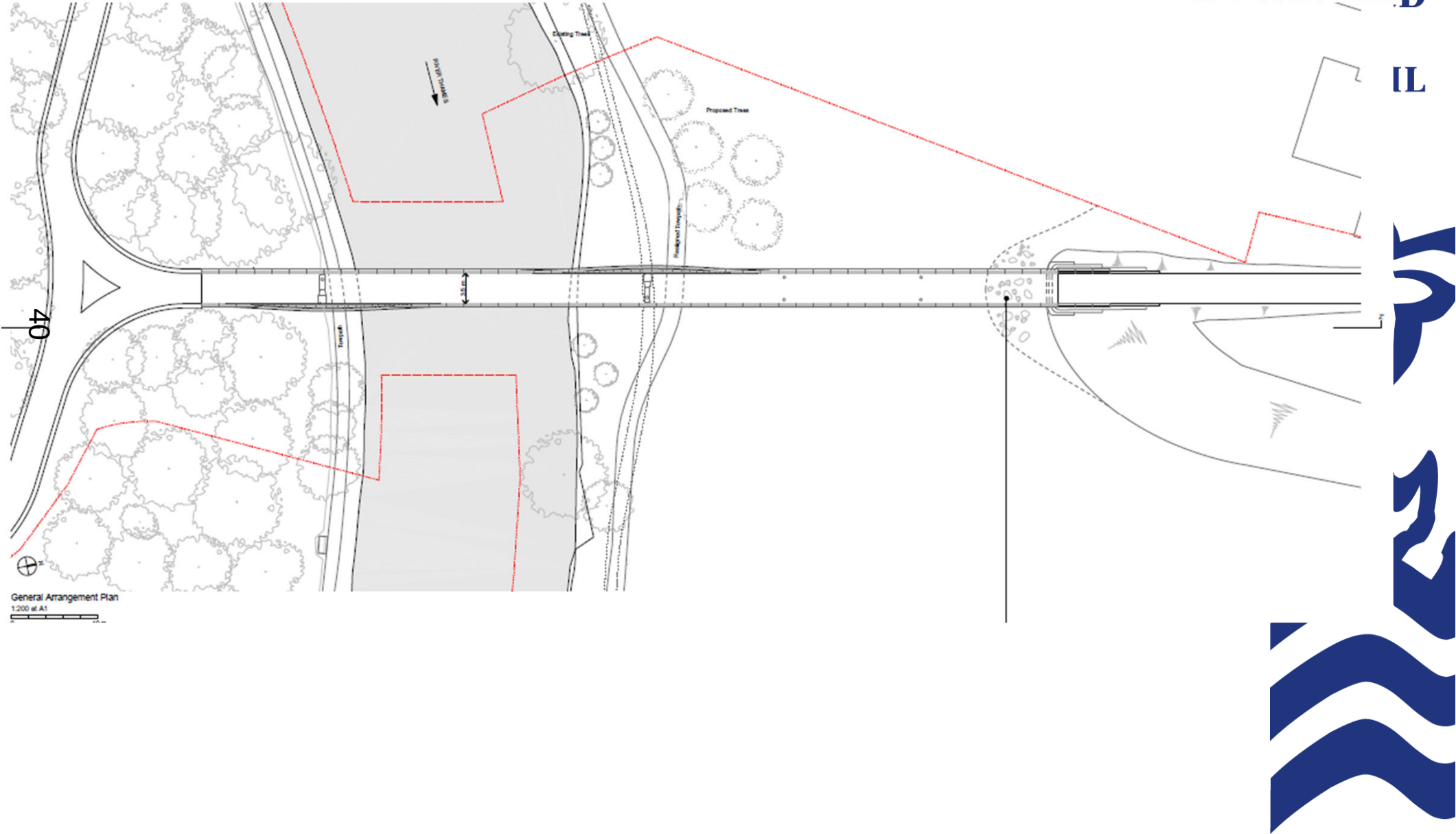
South Landscape Plan



www.oxford.gov.uk

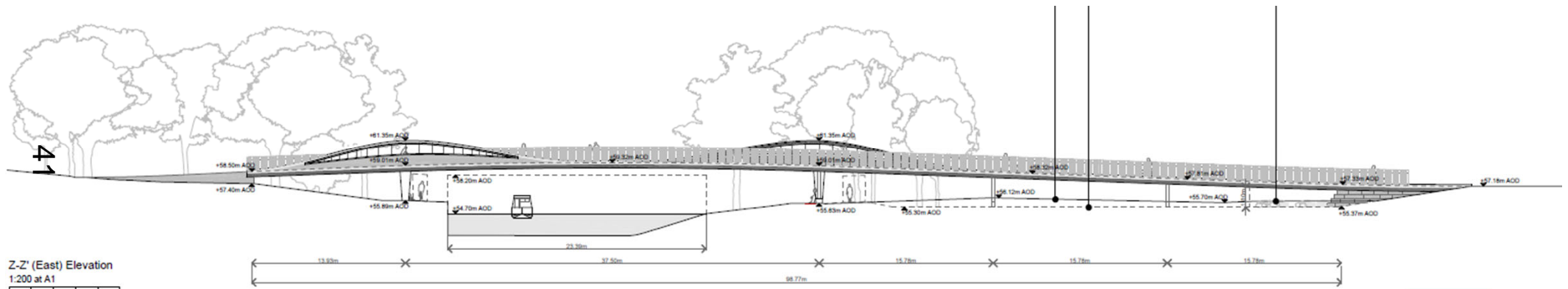


Bridge Layout

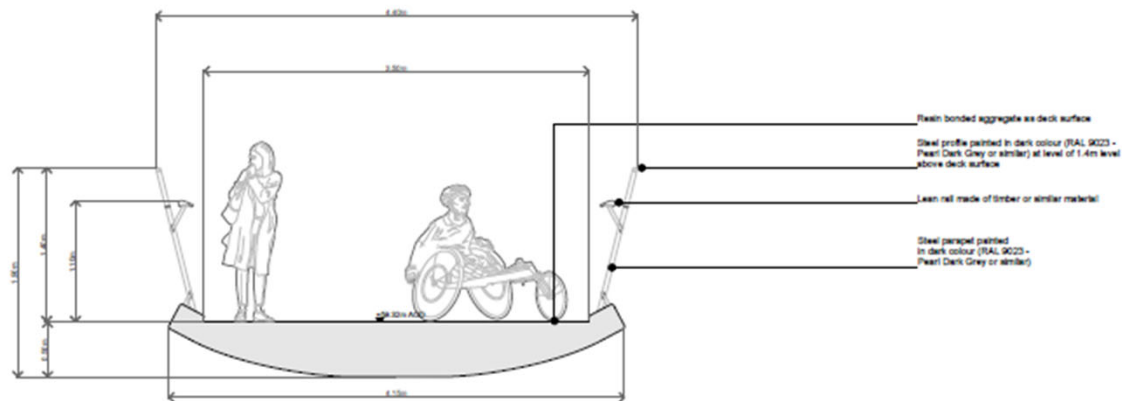


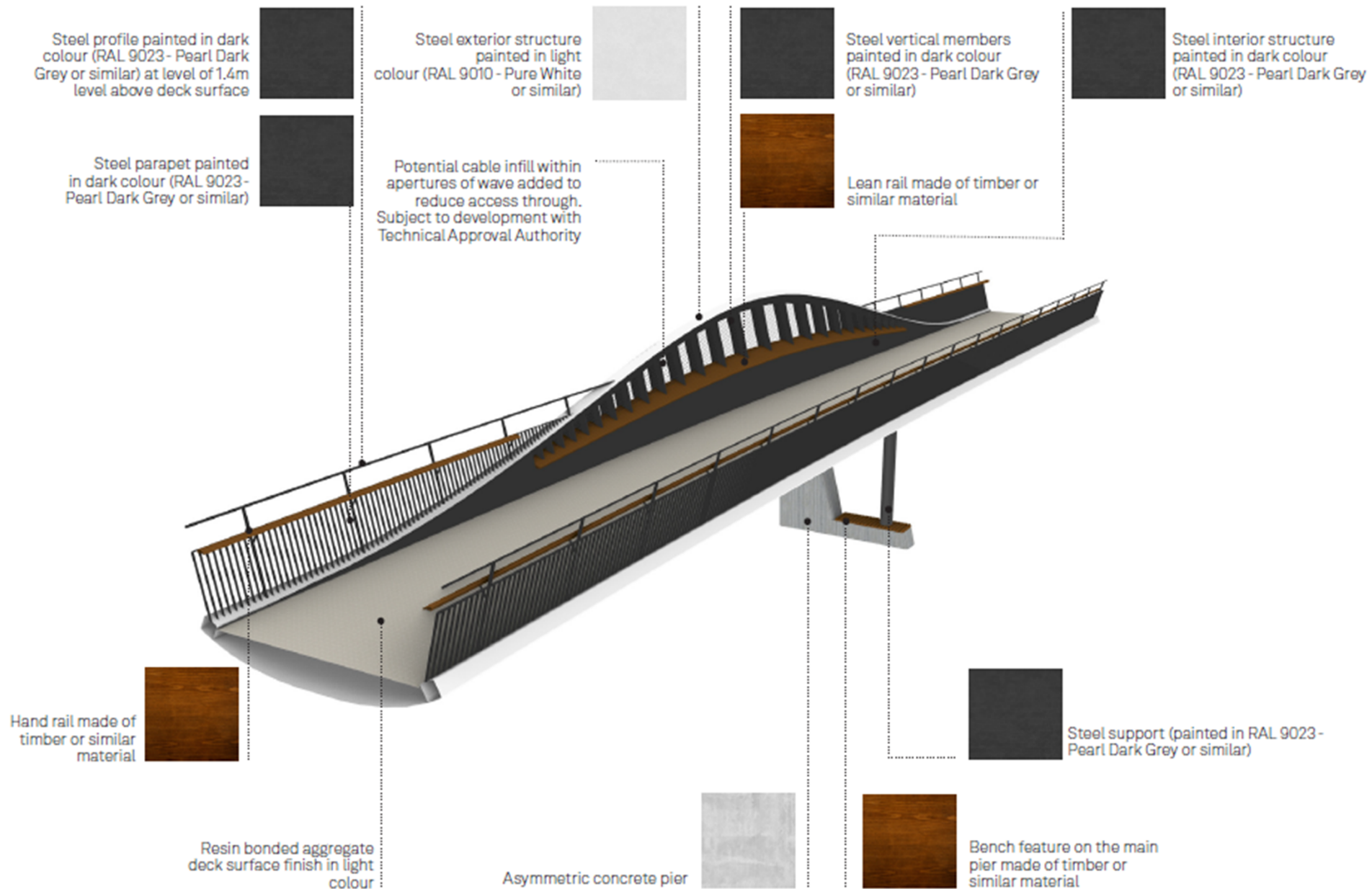
Bridge Elevation

www.oxford.gov.uk



42





Visualisation from Grandpont Nature Park/Southbank

ord.gov.uk



OXFORD
CITY
COUNCIL



44



Visualisation from Oxpens Meadow

d.gov.uk



45



Visualisation from Oxpens Road

ord.gov.uk



TYPE 3 VISUALISATION



View from Oxpens Road



www.oxford.gov.uk



View from Oxpens Meadows



www.oxford.gov.uk



View from towpath on northern side



www.oxford.gov.uk



View from towpath on northern side



www.oxford.gov.uk



View from towpath on southern side



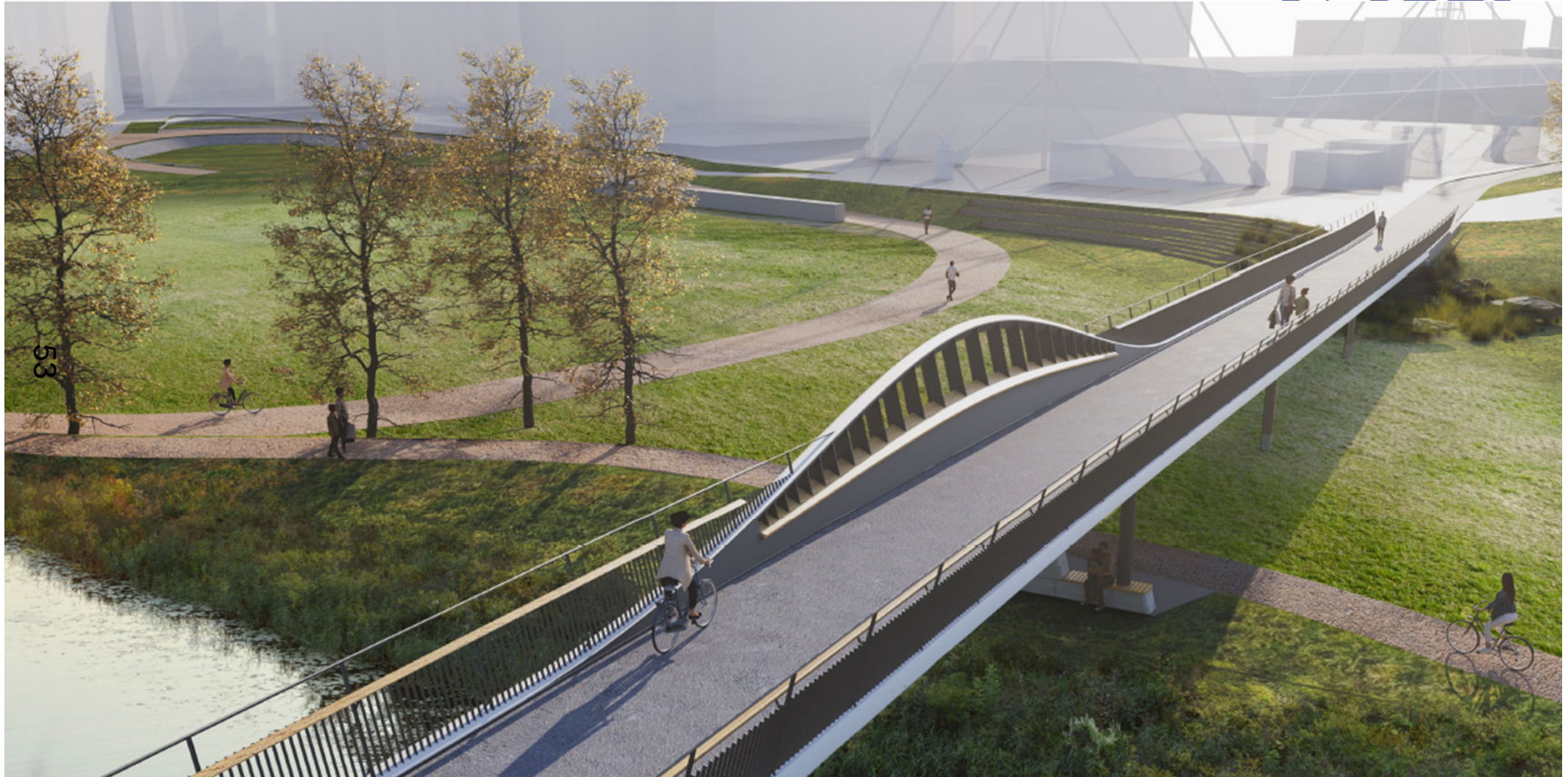
www.oxford.gov.uk



View from southern side



Visualisations



Visualisations



Visualisations

www.oxford.gov.uk



This page is intentionally left blank

Oxford City Planning Committee Presentation

www.oxford.gov.uk



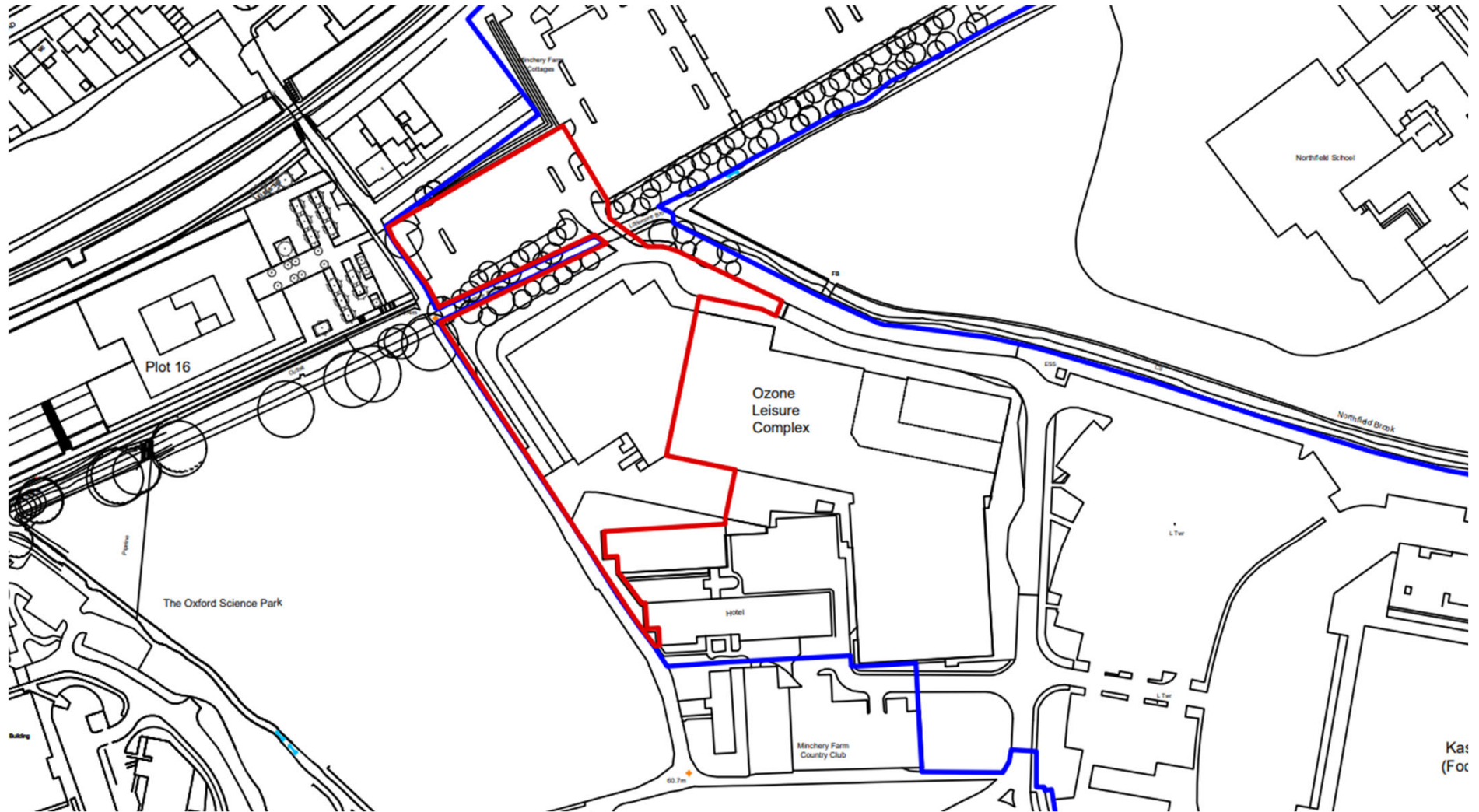
Reference Number: 23/01198/FUL

**Site Address: Unit 1, Ozone Leisure
Park, Grenoble Road**

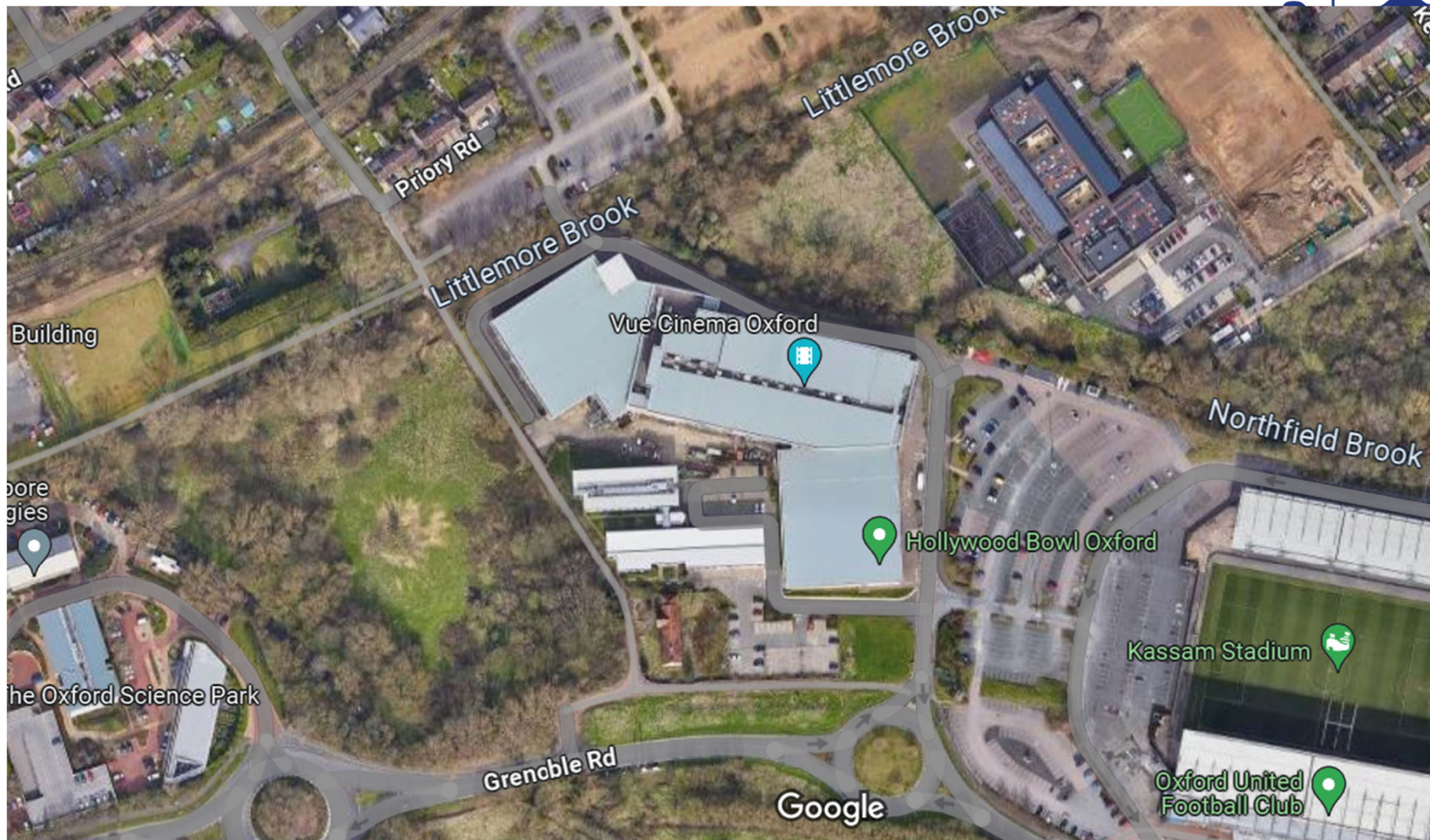


Location Plan

58



Site – Aerial Plan



North East Elevation (Entrance)



www.oxford.gov.uk



North Elevation and Service Access

gov.uk



West Elevation



www.oxford.gov.uk



West Elevation from Minchery Lane

oxford.gov.uk



63



South Elevation and Service Yard

l.gov.uk



**OXFORD
CITY
COUNCIL**



Car Park to North of Building



www.oxford.gov.uk



Proposed Site Plan

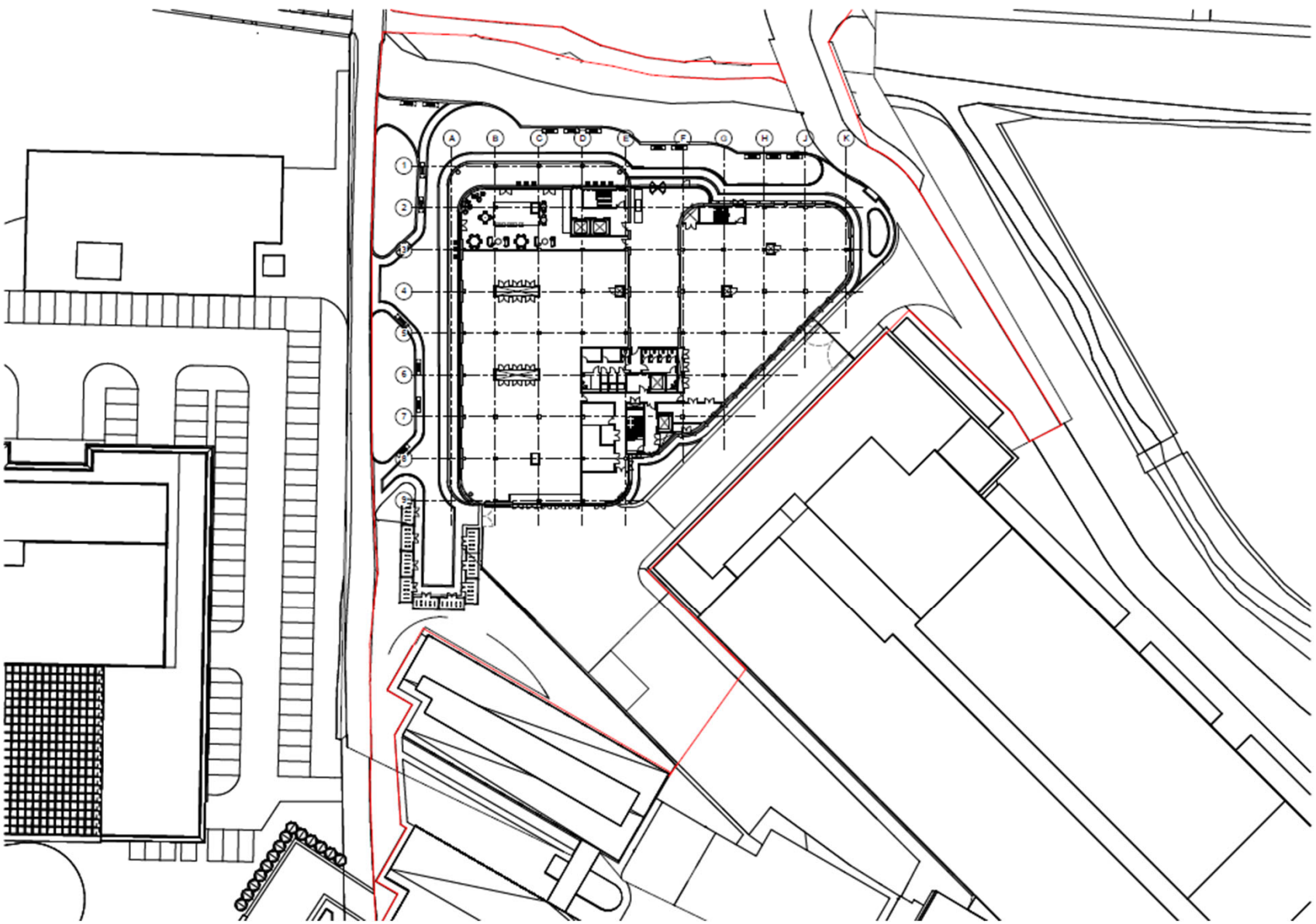
ord.gov.uk



OXFORD
CITY
COUNCIL



99




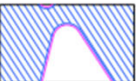







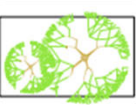
Landscaping Plan

ov.uk



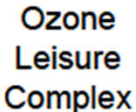
D

L

- 
Central Infill paving areas
 Infill paving - Marshalls Brekendale Sandstone, blasted, 450x450x70mm
 Division Strips - Marshalls conservation X sett paving 100x100x100mm in grey
- 
Paving to surround of planting areas
 Paving - Marshalls Brownridge Sandstone, blasted, 300x100x75mm.
 Division Strips - Marshalls conservation X sett paving 100x100x100mm in grey
- 
Paving to Building Perimeter
 Paving - Marshalls Brekendale Sandstone, 200x100x75mm
 Division Strips - Marshalls conservation X sett paving 100x100x100mm in grey
- 
Up-stand Edge units to SUD's Planting Areas
 Edge Units and planting demarcation strips - Marshalls Conservation kerbs, 255x145x15 long in cream
 Edge units raised off the surface by 25mm with drainage slots below to allow surface water to drain into planted areas.
- 
Service Yard Paving
 Brushed Concrete to match existing
- 
Service Access Road
 Tarmac road to match existing roads
- 
Existing Block Paving
 Block paving to be made good with existing reclaimed units from areas to be lifted to construct the new road turning head
- 
New Shrub planting
 New native shrub planting to be designed to enhance the existing landscape infrastructure, screen the building and provide improved biodiversity.
- 
SUD's Native Planting
 New native planting material located within defined SUD's drainage zones
- 
New Tree Planting

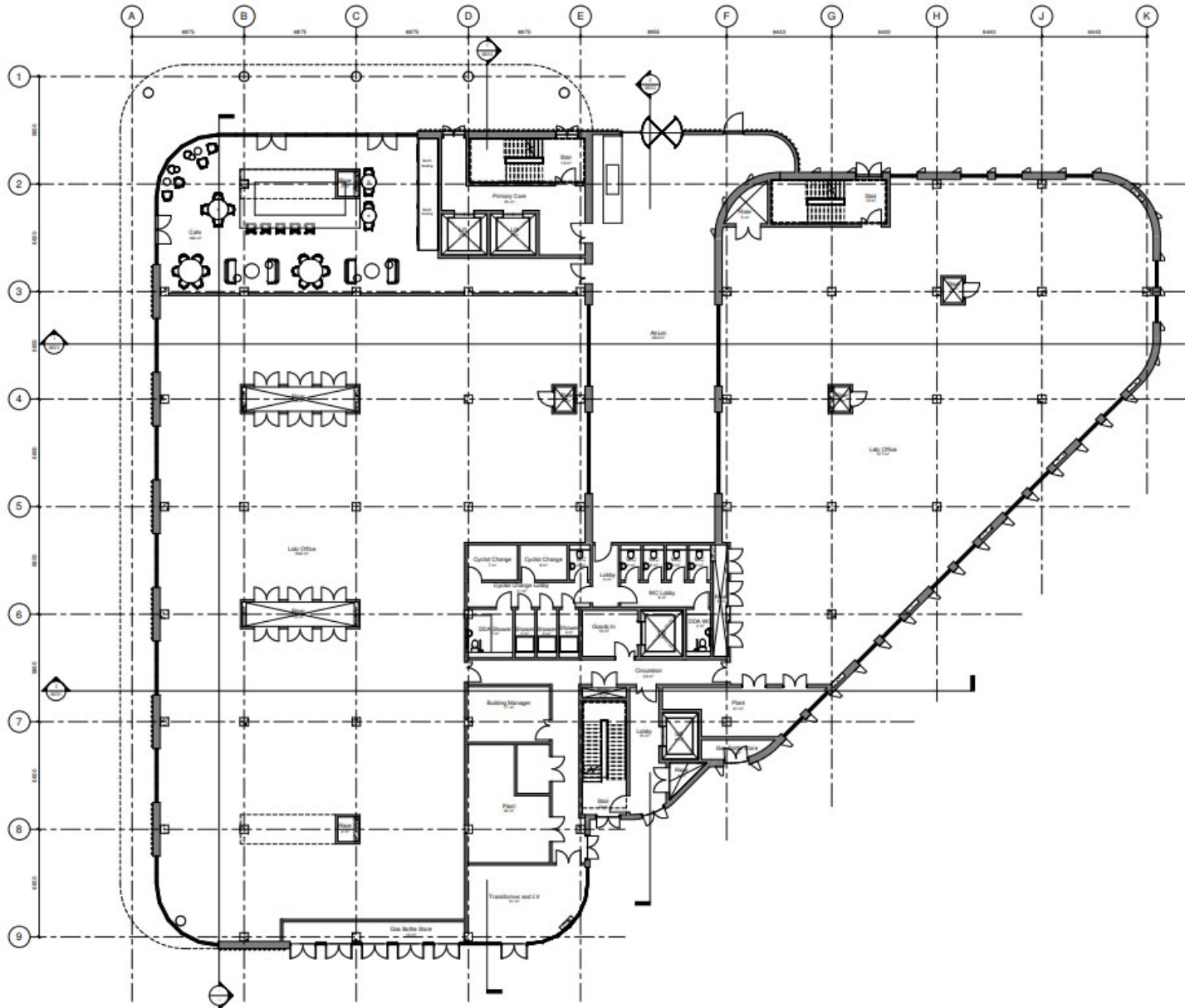


98





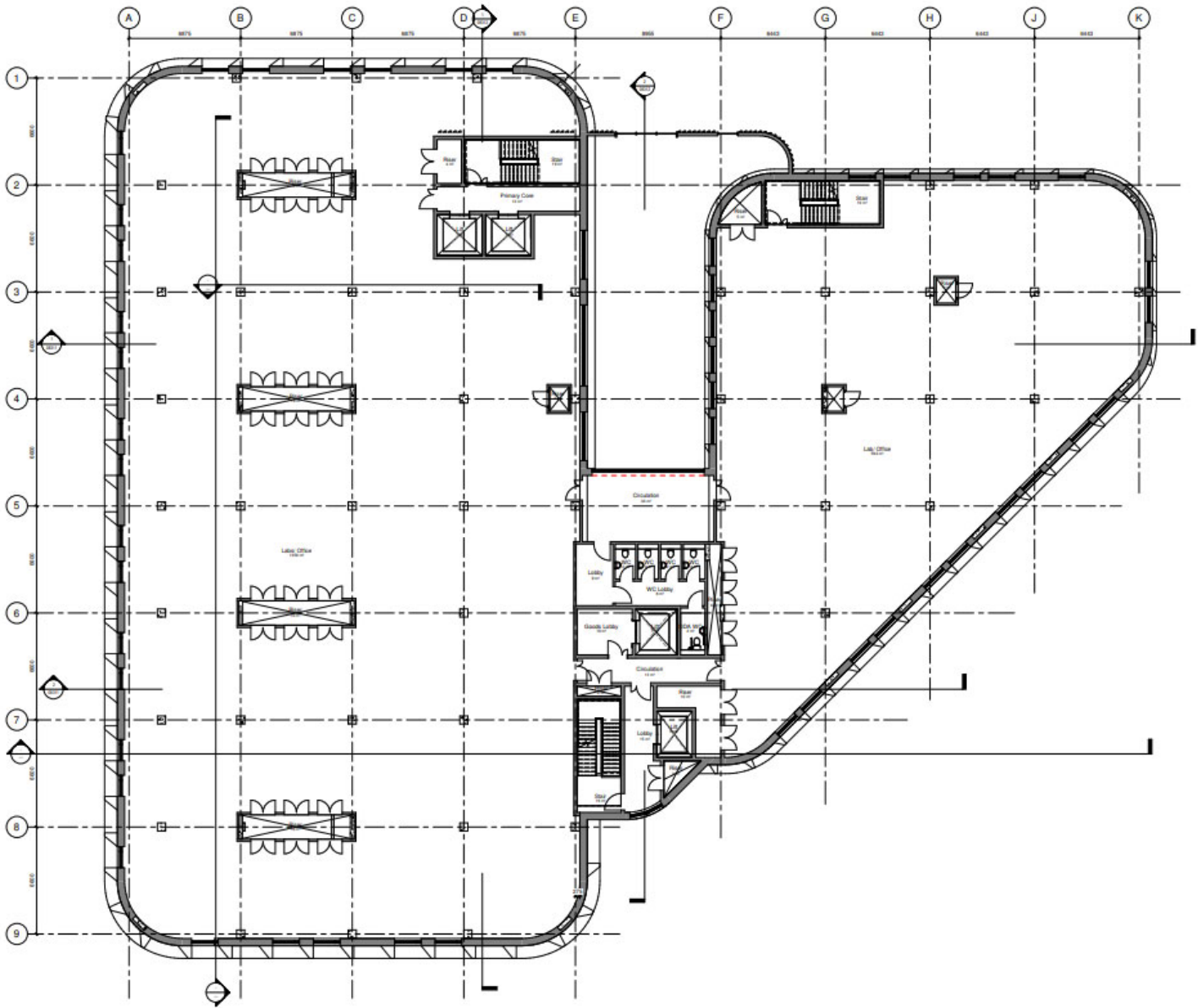
Proposed Ground Floor Plan





Upper Floor Plan

70

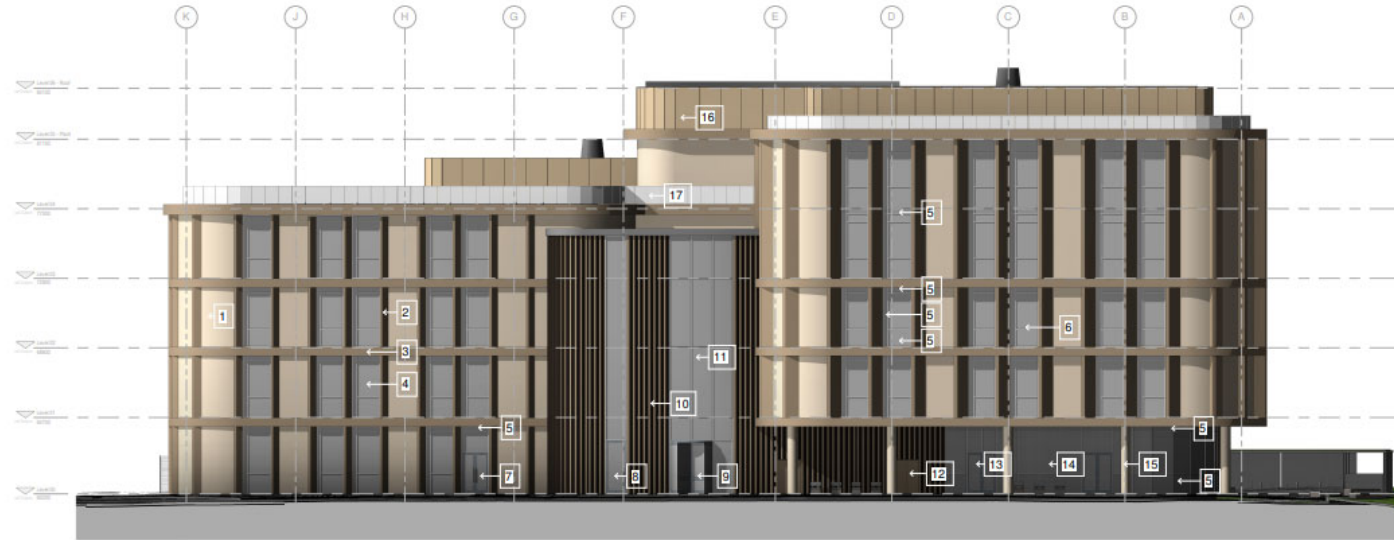


North and East Elevation

www.oxford.gov.uk



71

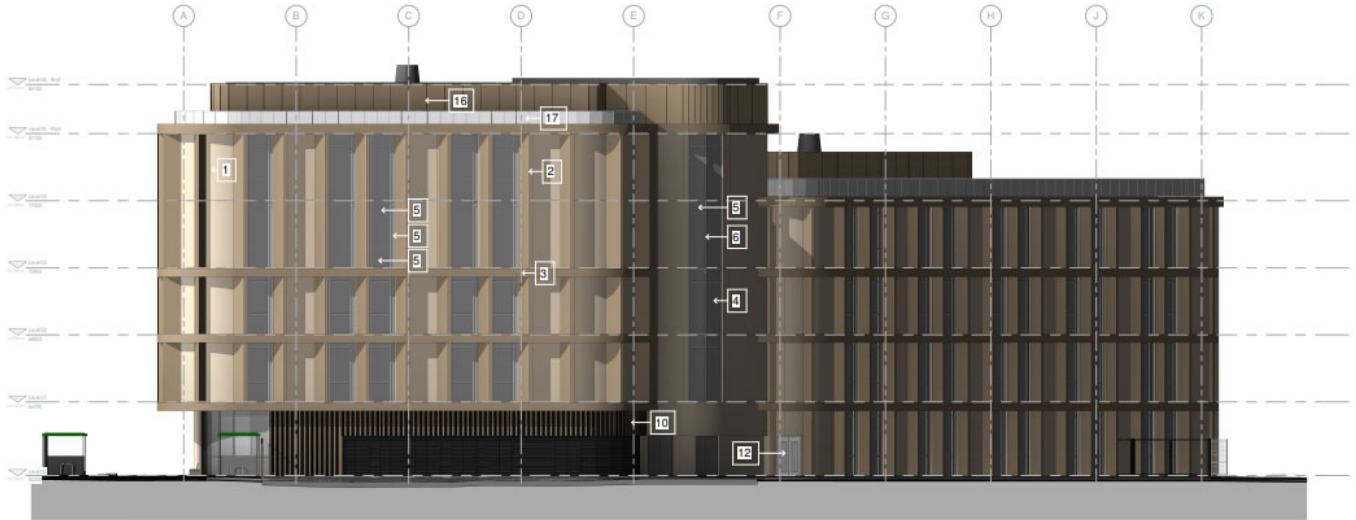


North Elevation - Coloured
1 : 100

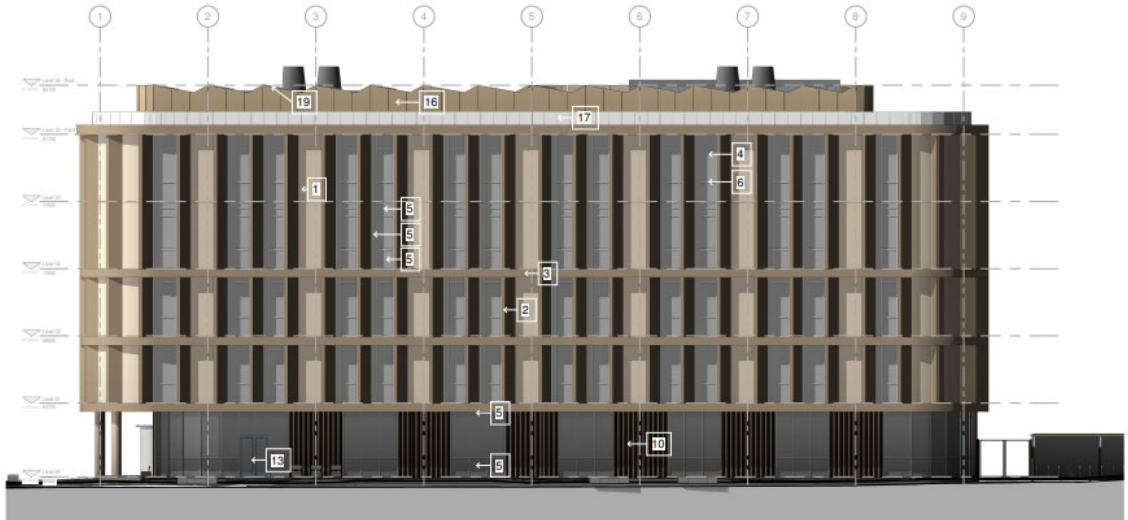


East Elevation - Coloured
1 : 100

South and West Elevation



South Elevation - Coloured
1 : 100



West Elevation - Coloured
1 : 100



North West View – From Minchery Lane

oxford.gov.uk



Corner View – Minchery Lane



View from Brook to Entrance



LVIA View from Overflow Car Park

xford.gov.uk



IL



76



LVIA – View from South of Priory – Grenoble Road

www.oxford.gov.uk



This page is intentionally left blank

Oxford City Planning Committee Presentation

Reference Number: 23/00516/FUL

**Site Address: The Annex, Madina
Mosque**

www.oxford.gov.uk



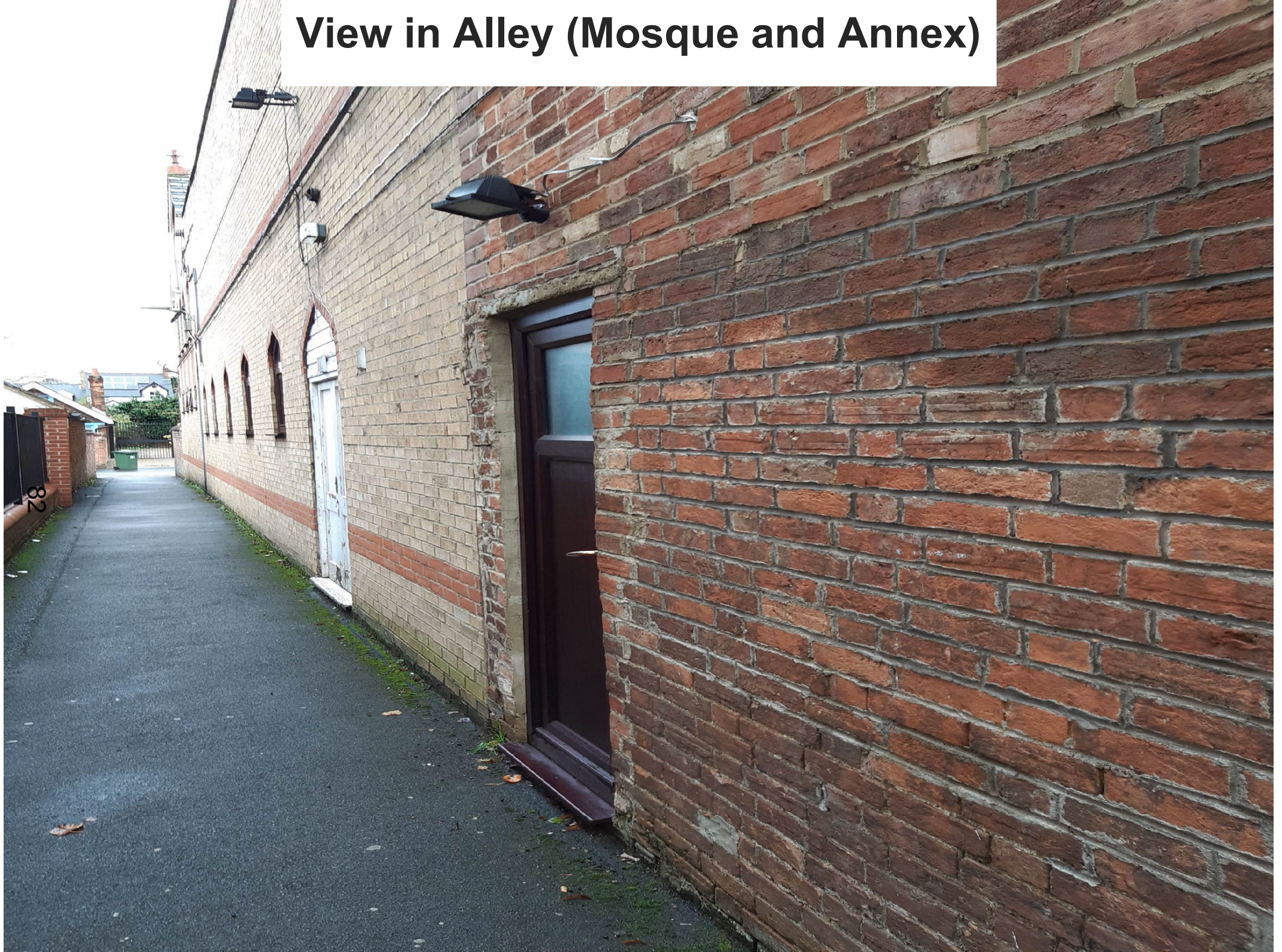
Site Location Plan



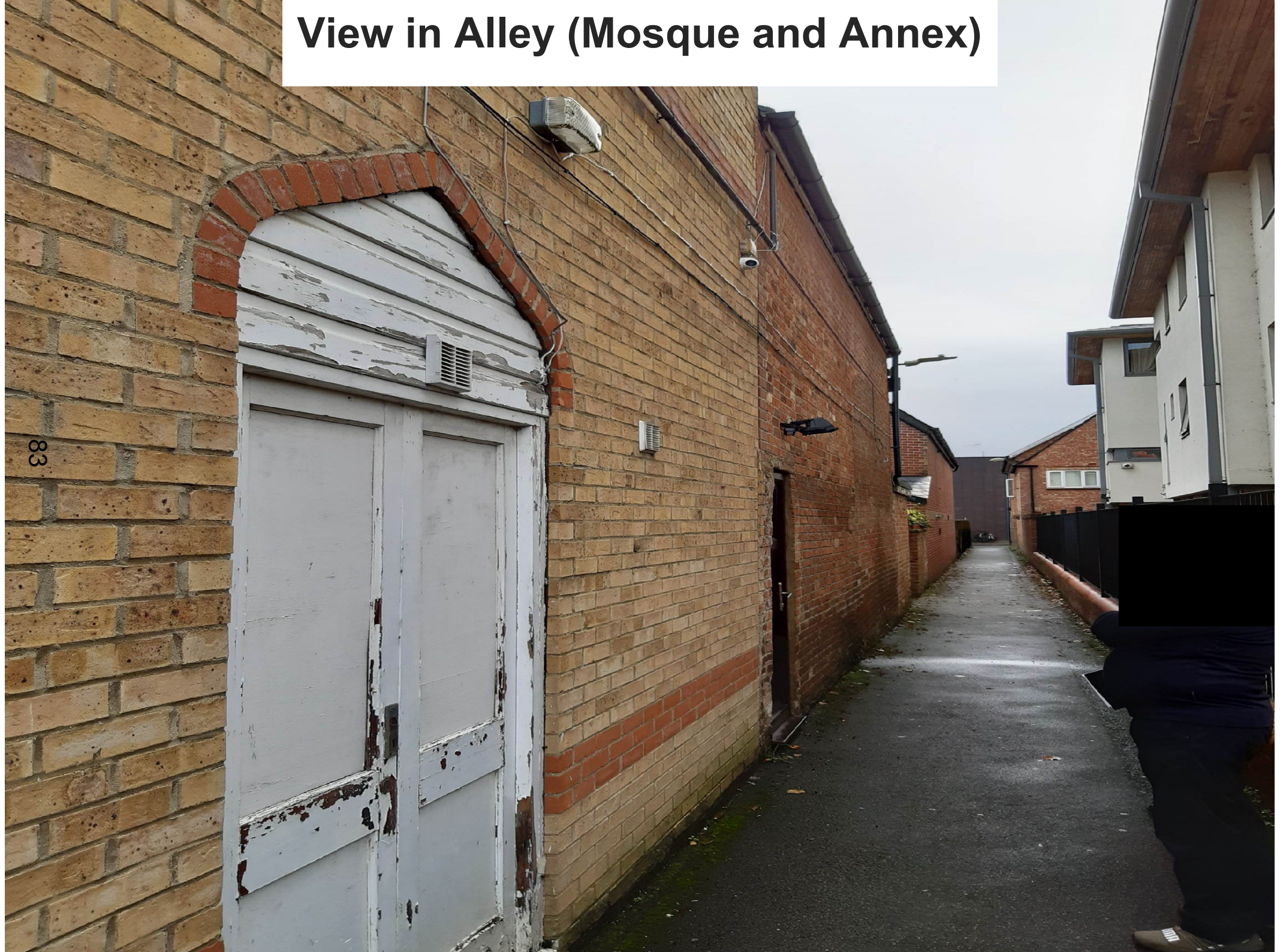
Existing Rear of Mosque/Annex Steps



View in Alley (Mosque and Annex)



View in Alley (Mosque and Annex)



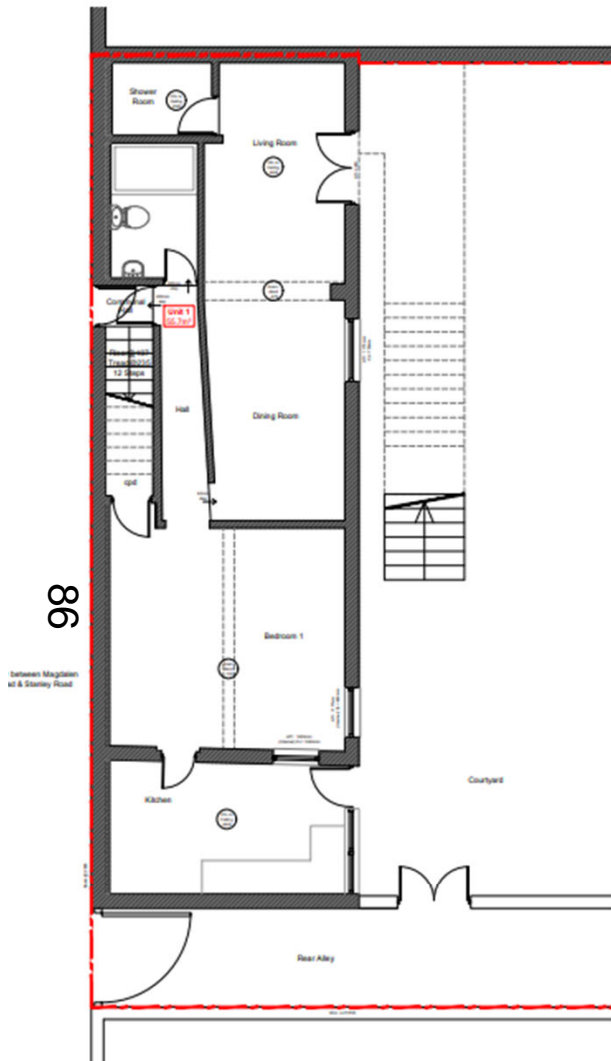
View in Courtyard



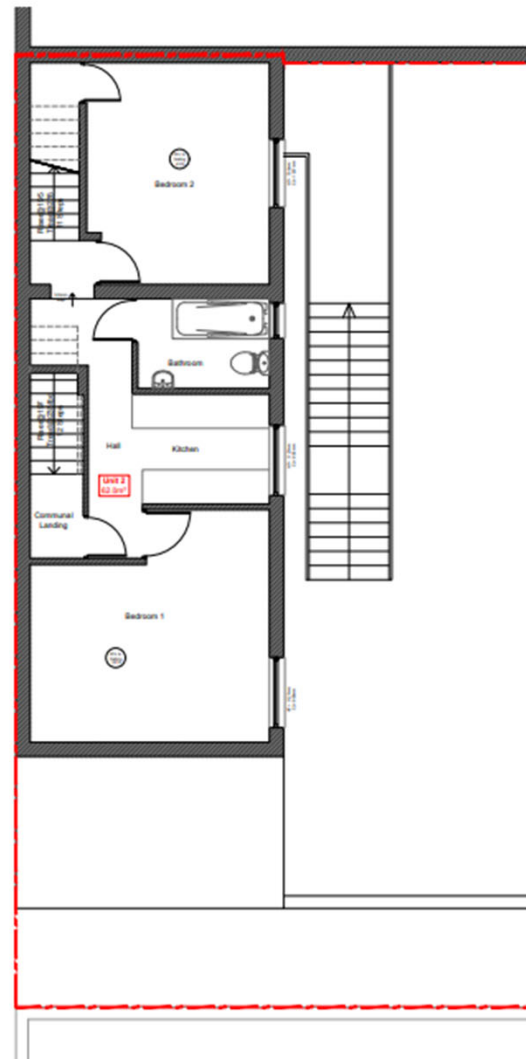
View in Courtyard



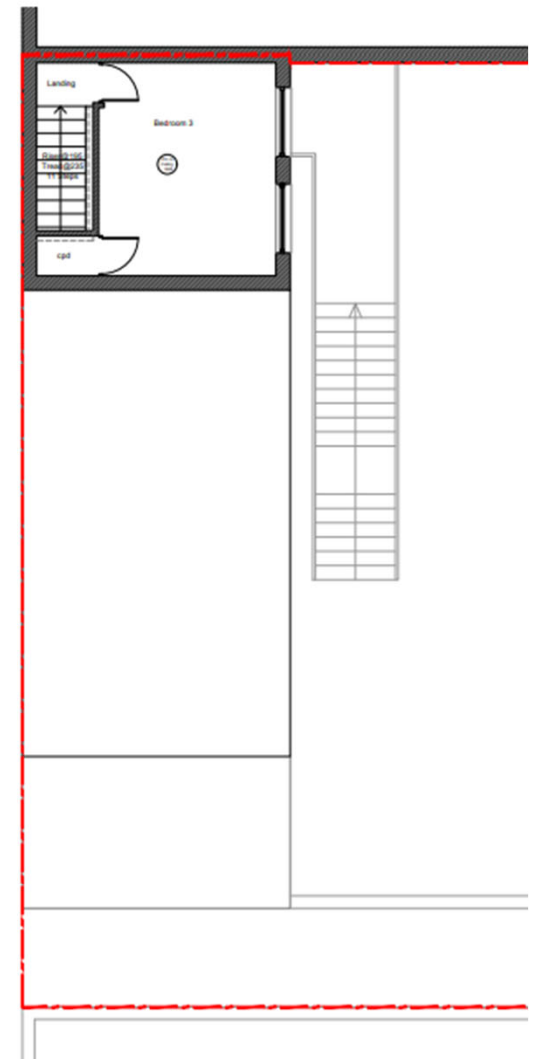
Existing Annex Floor Plans



Existing Ground Floor

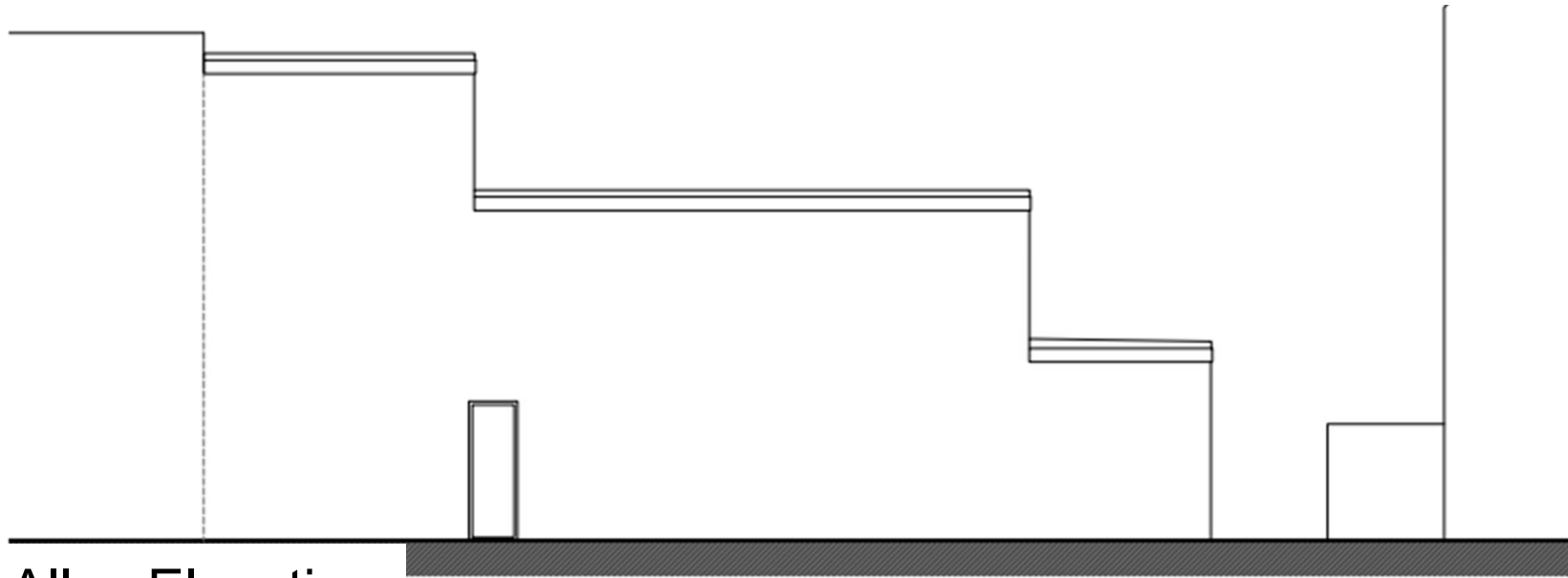


Existing First Floor



Existing Second Floor

Existing Annex Elevations



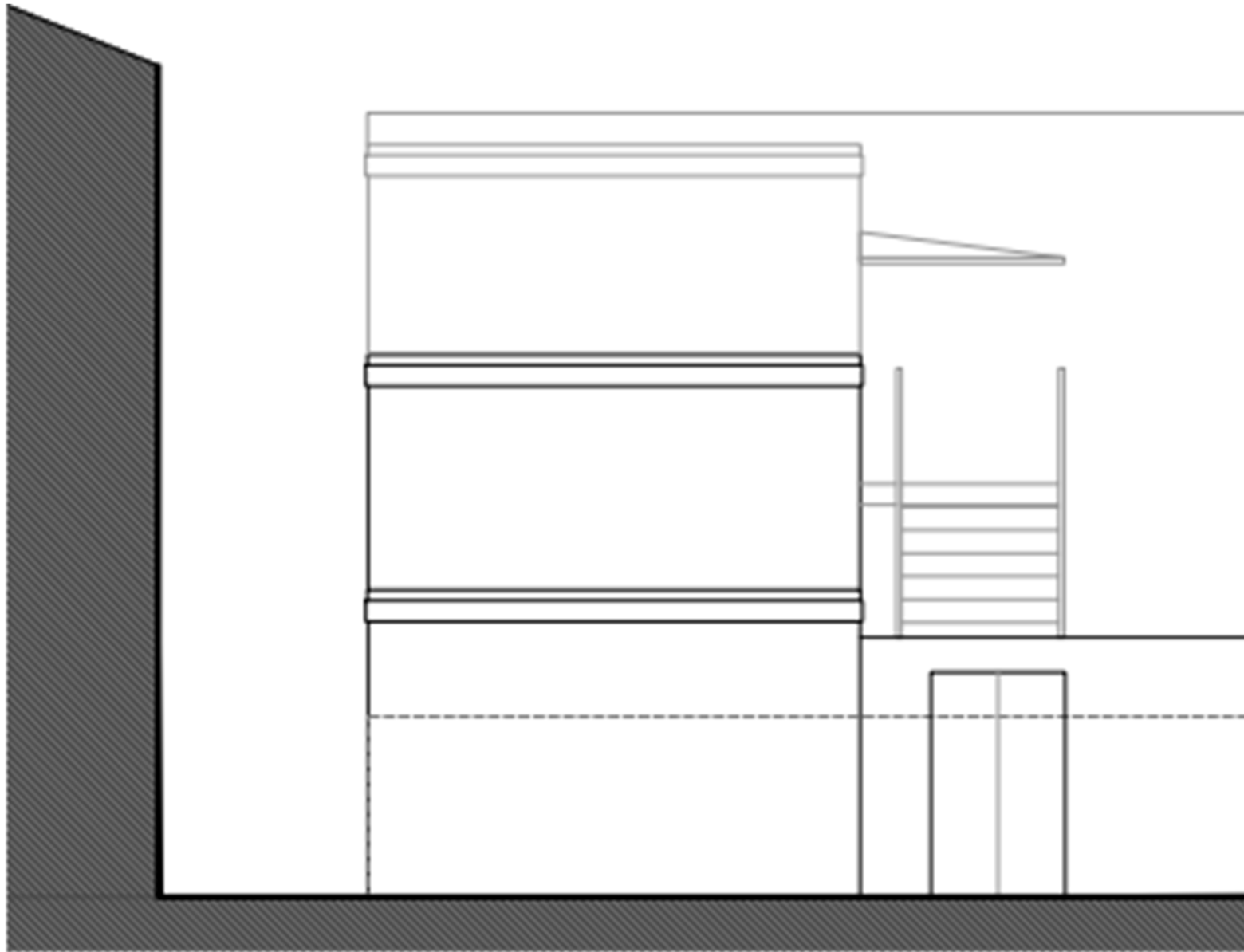
Existing Alley Elevation



Existing Courtyard Elevation

Existing Annex Elevations

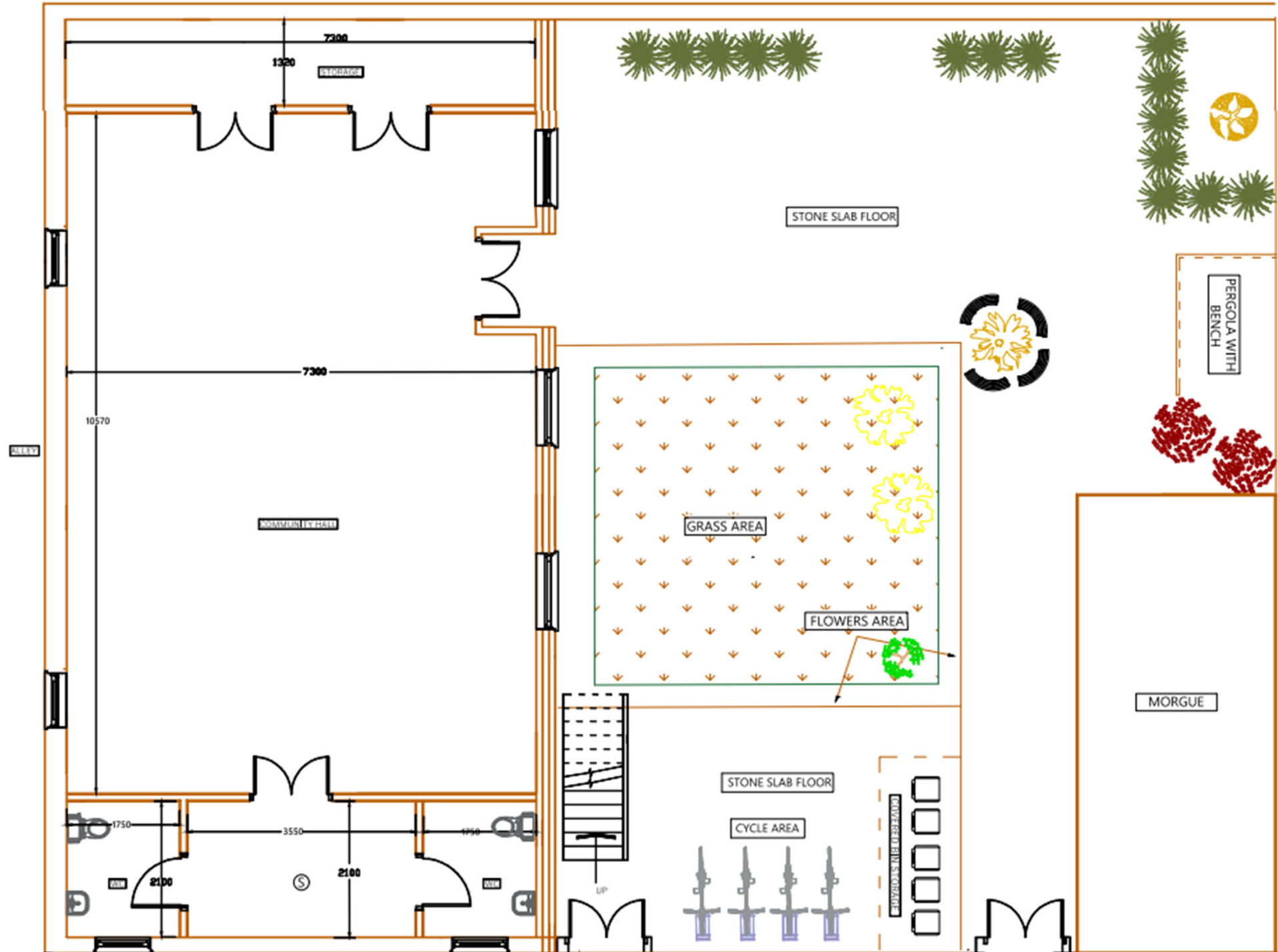
88



Existing Rear Elevation

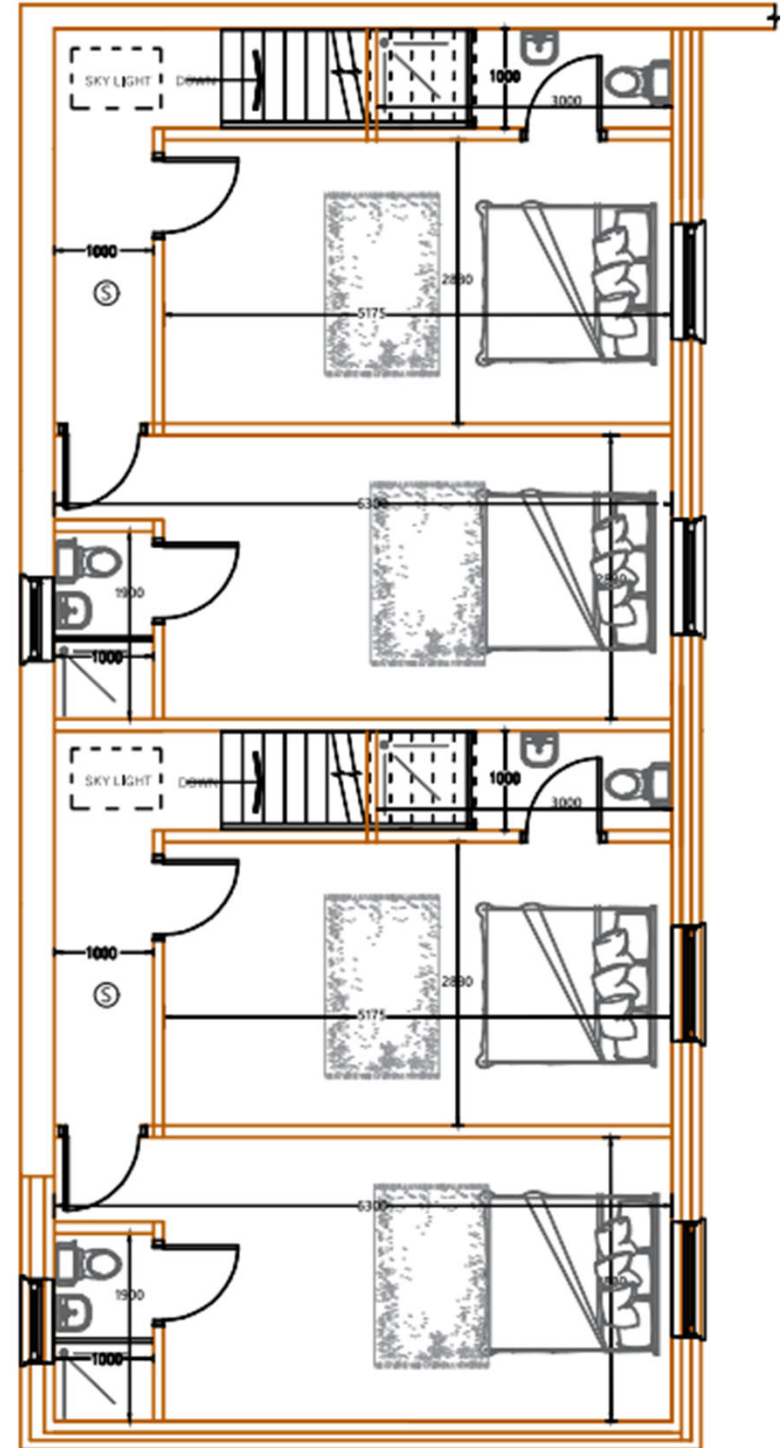
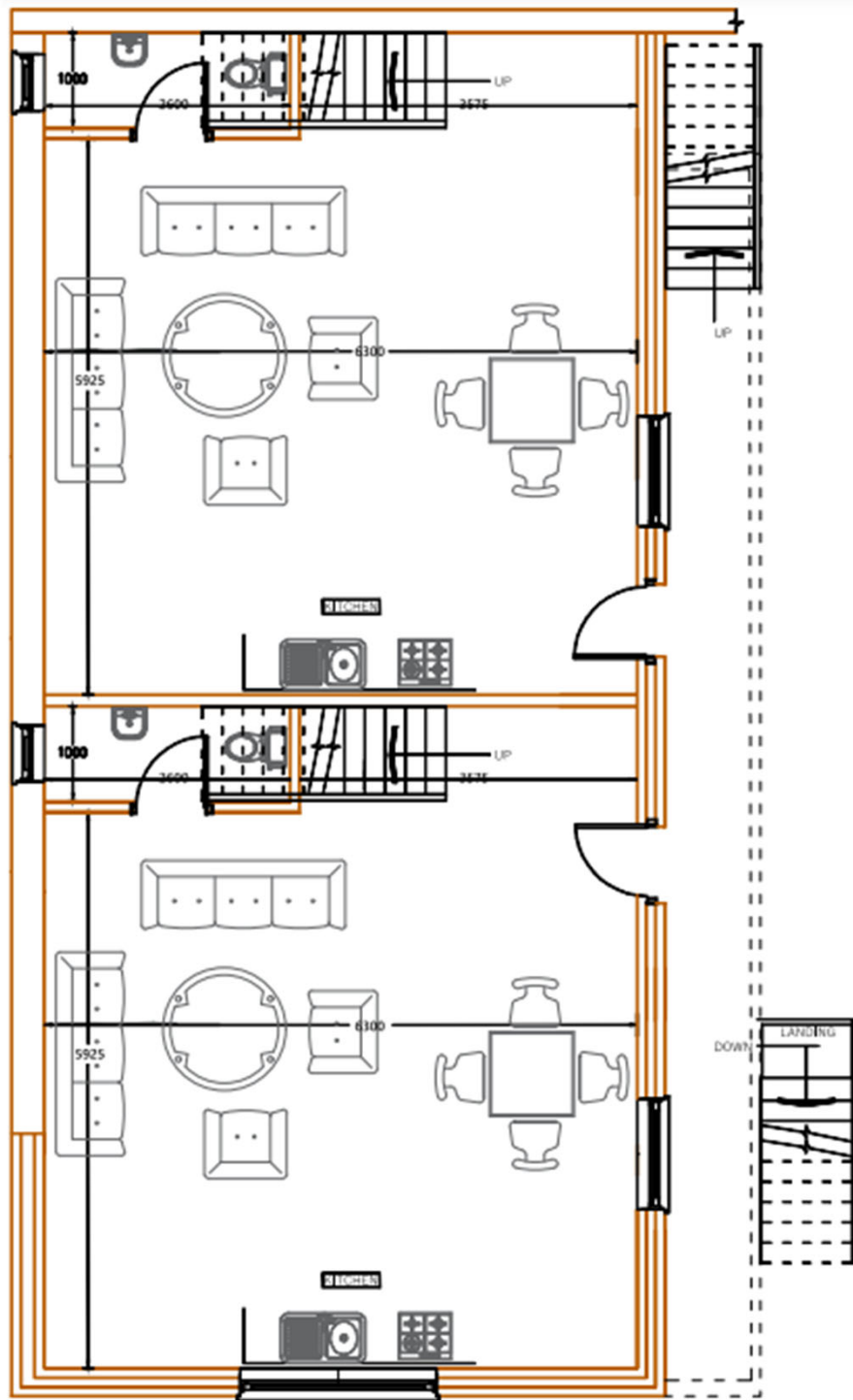
Proposed Site Plan and Ground Floor Plan

68

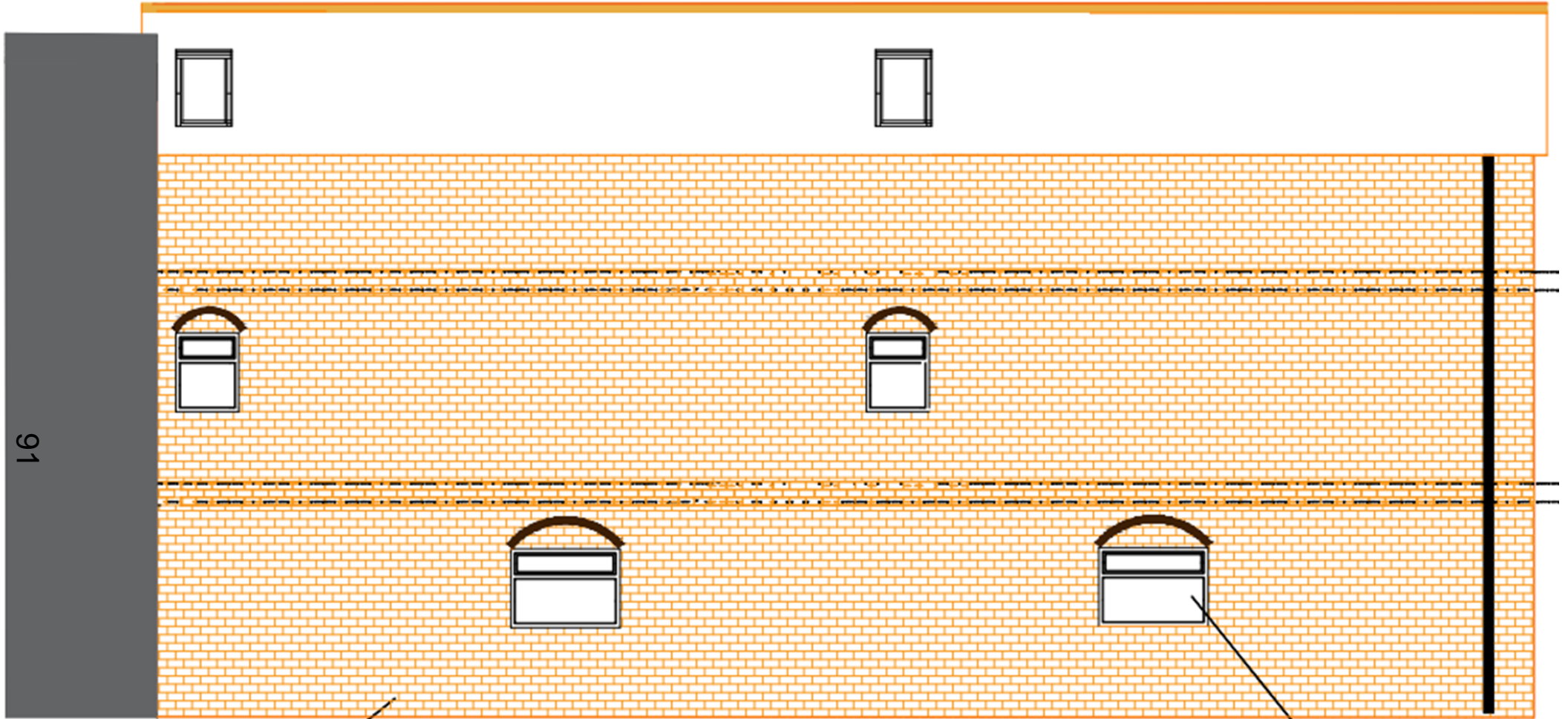


Proposed First and Second Floor Plan

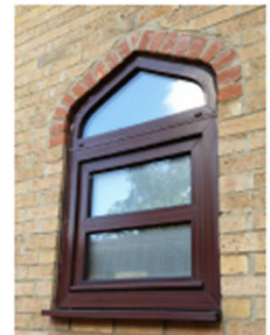
06



Proposed Alley Elevation



THE BRICK
WORK ON THE
WALLS WILL BE
RETAINED SAME
AS IT IS.

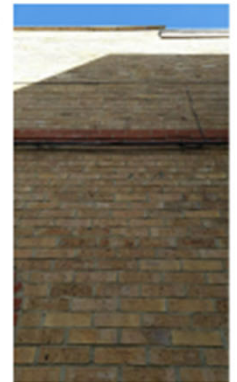


Proposed Annex Elevations - Courtyard



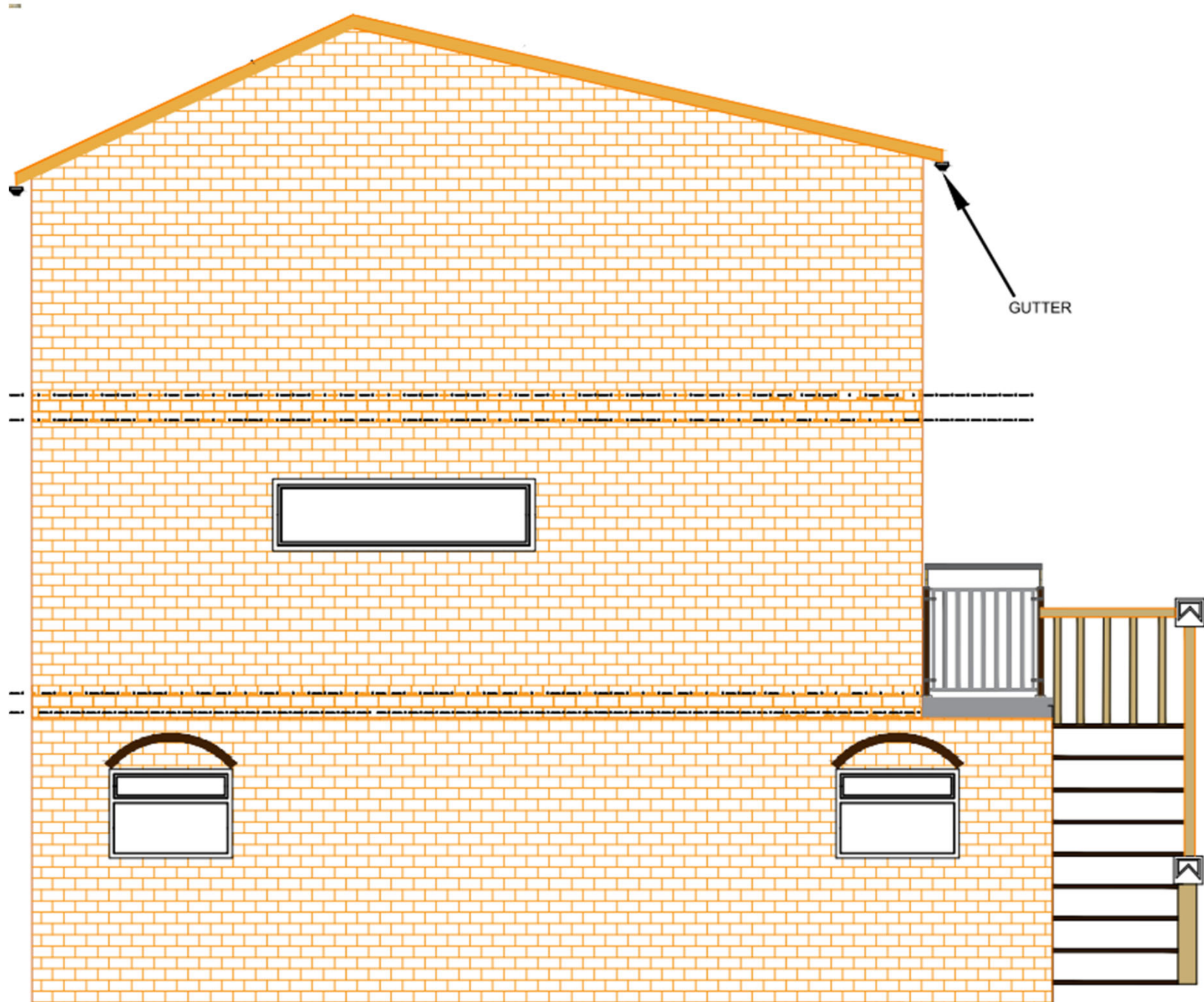
RAIN WATER PIPE

THE BRICK
WORK ON THE
WALLS WILL BE
RETAINED SAME
AS IT IS.



Proposed Annex Rear Elevation

93



This page is intentionally left blank